

LAKE CHAD BASIN COMMISSION

FIRST COORDINATION MEETING OF THE SAHEL PROJECT

INSTITUTIONAL FRAMEWORK, ON-GOING ACTIVITIES AND COOPERATION

6TH MAY 2014

MOHAMMED BILA

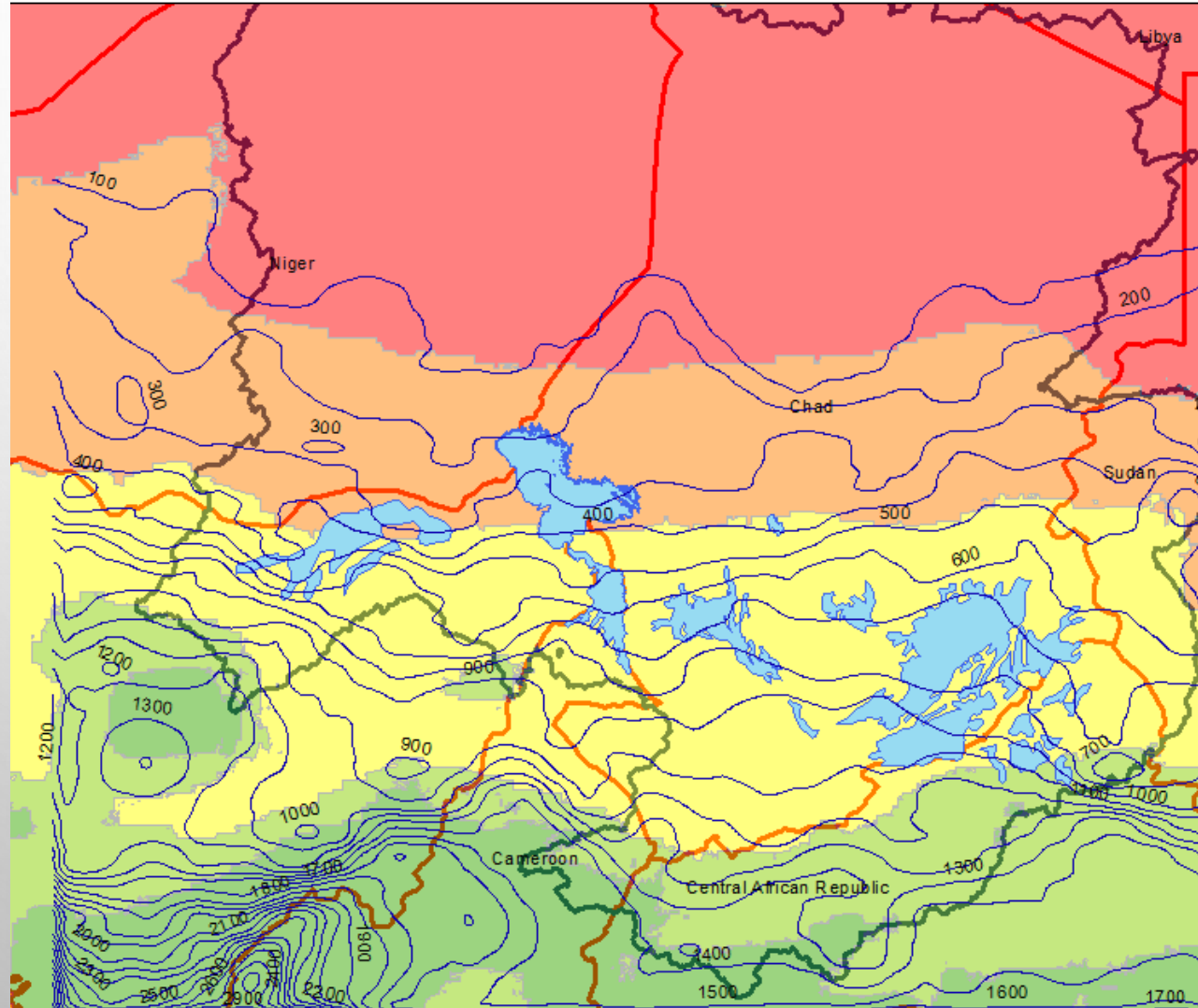
LAKE CHAD BASIN OBSERVATORY

NDJAMENA,

m.bila@cblt.org. www.cblt.org

CLIMATE

Average Annual Aridity Index 1998 - 2008



Aridity Zones

- Hyper-arid ($AI < 0.05$)
- Arid ($0.05 < AI < 0.2$)
- Semi-arid ($0.2 < AI < 0.5$)
- Sub-humid ($0.5 < AI < 0.65$)
- Humid ($AI > 0.65$)

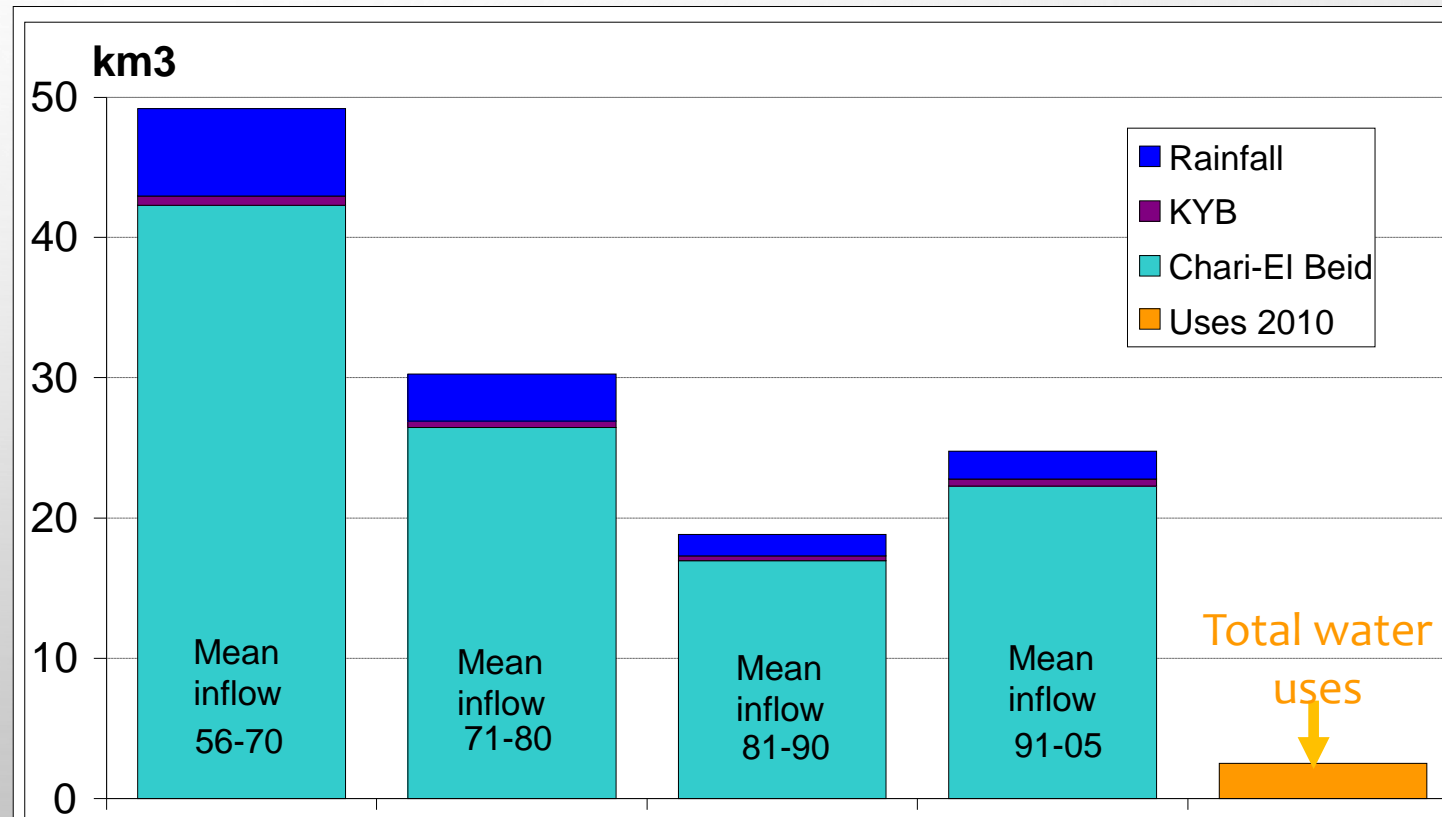
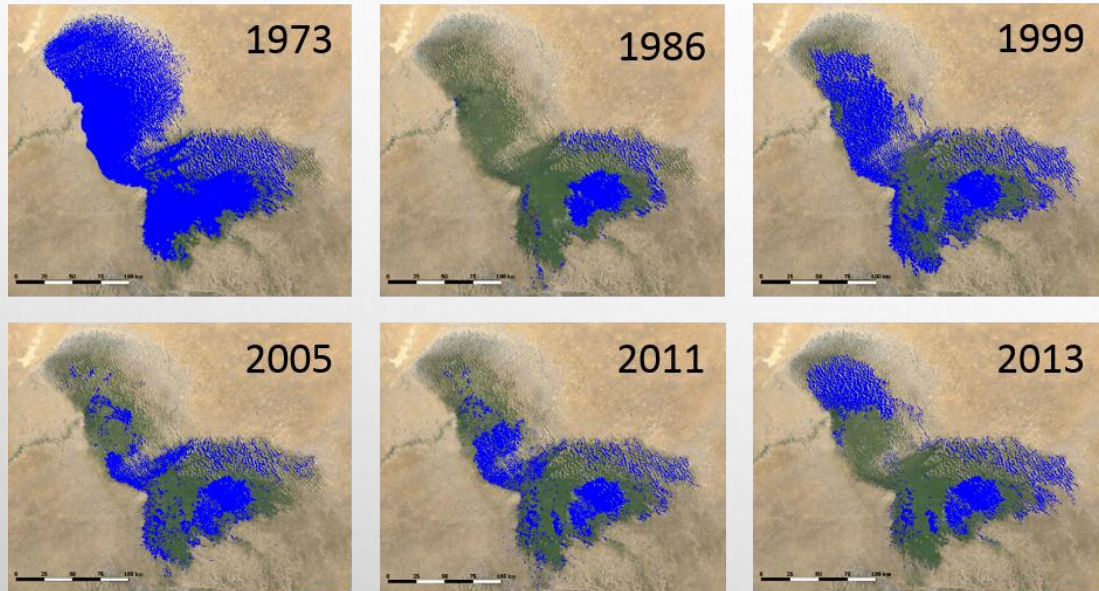
The Annual Aridity Index indicates that potential evapo-transpiration (PET) exceeds the annual precipitation (P) in most parts of Lake Chad Basin.

Legend

- Precipitation 1973-2007 (mm)
- Flood plains
- Lake Chad
- Lake Chad Topographic Basin
- Member States

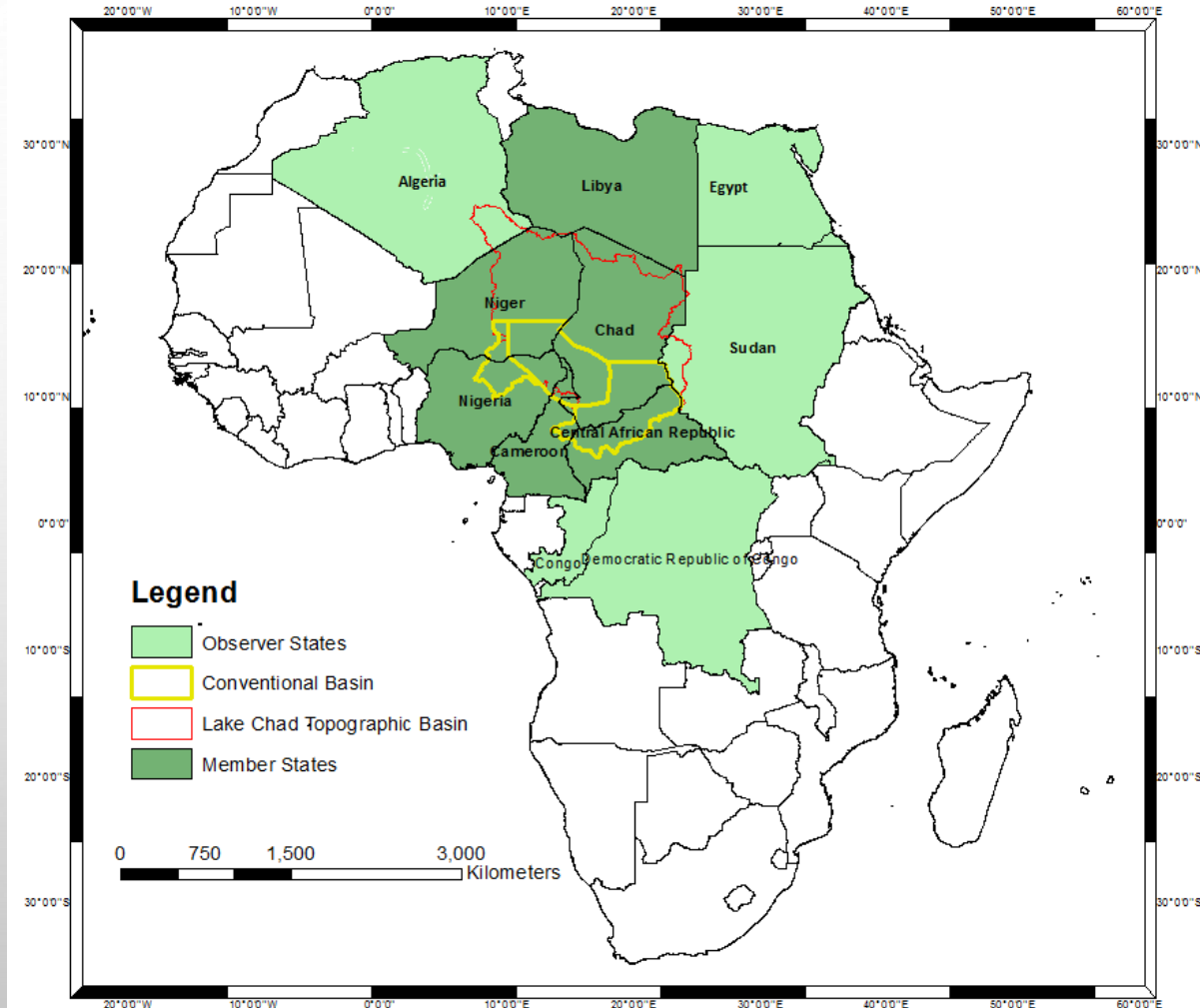
WATER RESOURCES

Change and Variability of Hydrological Regime



LEGAL & INSTITUTIONAL FRAMEWORK

- Created on the 22nd May 1964 by the Fort Lamy Convention
- Current Member States:
 - Chad (1964)
 - Cameroun (1964)
 - Niger (1964)
 - Nigeria (1964)
 - RCA (1994)
 - Sudan (2000) Yet to Ratify
 - Libya (2008)
 - Algeria, Egypt, Republic of Congo, Democratic Republic of Congo (Observer Status)



ORGANS

- The Summit of Head of States
 - Highest decision-making and advisory organ of the commission, meet annually to take “Decisions”
- The Council of Ministers (COM)
 - Comprising two ministers per country, meets annually to approve budget and make “Resolutions”
- The Executive Secretariat
 - Permanent secretariat located in Ndjamena, Coordinate and implement “Decisions” and “Resolutions” of higher organs
- National Focal Points
 - Administrative structures in the Member States
- Committees of National Technical Experts
 - Analyse issues, negotiate and prepare resolutions for the Council of Ministers

FINANCING

- The 2013 programme of activities and budget of the Executive Secretariat is 4,116,725,066 XAF (**€ 6,275,906.90**) as contributions from the Member States while
- Development partners contribute 12,503,371,139 XAF (**€ 18,755,056.71**)
- Contribution formula is as follows;
 - Nigeria - 40%
 - Cameroon - 20 %
 - Libya - 18%
 - Chad - 11%
 - Niger - 7%
 - Car - 4%

LAKE CHAD BASIN WATER CHARTER

- The objective is to define a framework for water resources management and prevent conflicts in the lake chad basin
 - The charter define **limits** and **practical commitments**
 - Consist of a **cooperation framework** to implement them

National level

- Obligation to prevent infringements - control,
- National reports of implementation
- **National basin agency**

International level

- Harmonisation of legal frameworks
- Implementation reports
- Possibility of inspection
- LCBC saddle with more assignments
- Stakeholders forum

Partnership

- Participation of non-member states and international organisations

LAKE CHAD VISION 2025

- The lake chad region would like to see by the year 2025 the lake chad - common heritage – and **other wetlands maintained at sustainable levels** to ensure the economic security of the freshwater ecosystem resources, **sustained biodiversity and aquatic resources of the basin**, the use of which should be equitable to serve the needs of the population of the basin thereby reducing the poverty level.
- A lake chad region where the regional and national authorities accept responsibilities for freshwater, ecosystem and biodiversity conservation and judicious integrated river basin management to achieve sustainable development.
- A lake chad region where every member state has equitable access to safe and adequate water resources to meet its needs and rights and maintain its freshwater ecosystem and biodiversity resources.

25 - YEAR STRATEGIC ACTION PROGRAMME (SAP)

- **EQO I:** Improved Quantity and Quality Water in the Lake Chad Basin
 - **INDICATOR:** Lake chad is maintained at a sustainable level with reference to the base year (1990); A measurable decline in levels of the main contaminant groups in the water, sediment and biota
- **EQO II:** Restoration, Conservation and Sustainable Use of Bio-resources in the Lake Chad Basin
 - **INDICATOR:** Measurable and sustained increase in human development indices in the Lake Chad Basin
- **EQO III:** Conservation of Biodiversity in the Lake Chad Basin
 - **INDICATOR:** Arrest biodiversity erosion due to anthropogenic impacts
- **EQO IV:** Restoration and Preservation of Ecosystems in the Lake Chad Basin
 - **INDICATOR:** Measurable increase in restored aquatic and terrestrial ecosystems
- **EQO V:** Strengthened Participation and Capacity of Stakeholders, and Institutional and Legal Frameworks for Environmental Stewardship for the Lake Chad Basin
 - **INDICATOR:** Enhanced involvement of stakeholders in the naps and SAP implementation

LCBC FIVE YEAR INVESTMENT PLAN (FYIP) 2013 – 2017

- Approved by the Summit of Head of States in 2012
- Donor Roundtable Held in April 2014
- Total Cost - € 891,258,173
- Regional Cost (Pledged by AfDB)- € 89,125,817
- Member States NAPS - € 802,132,356

ON-GOING ACTIVITIES

- Sustainable management of the water resources of the Lake Chad Basin – (BMZ, € 4 Million)

(BGR) - " Advice on Groundwater Resources for the Lake Chad Basin Commission“

- **Objective:** Strengthen the LCBC to coordinate the exchange of groundwater data between the Member States, integrate them in a management system and elaborate water resources strategies of sustainable character. (**Monitoring and Sampling Programme, with Member States, Models and Early Warning System**)

(GIZ) - "Organizational Advisory Services for the Lake Chad Basin Commission“

- **Objective:** To support LCBC in its organisational development and to strengthen the planning, cooperation, and communication capacities for a better performance of its tasks and to achieve sustainable results. (**DSS Support - expanding database, GIS, software, structuring the two-year report, developing a monitoring and evaluation system, setting up an indicator system, reactivating the data exchange protocol with the Member States**)

ON-GOING ACTIVITIES

- (GIZ) - Climate Change Adaptation
- Sustainable development programme of the Lake Chad Basin (PRODEBALT) – AFDB - 41.84 BILLION FCFA
- Study for the Oubangui-Chari Inter-Basin Water Transfer (IBWT) – Member States

PROJECTS IN PREPARATION

- Title: Improving Lake Chad Management Through Building Climate Change Resilience and Reducing Ecosystem Stress Through Implementation of the SAP - UNDP GEF, \$ 5,830,000
- Executing Agency: LCBC/UNESCO
- Title: Lake Chad Basin Regional Program for the Conservation and Sustainable Use of Natural Resources and Energy Efficiency – AfDB GEF, \$ 20,313,084

CONCLUSION

- Established partnership with Member States since 1964
- Experience in multi-disciplinary Joint-fact finding with multiple stakeholders at all levels
- Undergoing reforms to strengthen the planning, cooperation, and communication capacities for a better performance of its tasks and to achieve sustainable results.
- The LCBC is in better position to plan, coordinate activities and establish partnership with Member States in the “Integrated and Sustainable Management of Shared Aquifer Systems and Basins of the Sahel Region Project”

The image features a light gray background with a subtle gradient. In the top-left and bottom-right corners, there are clusters of realistic, 3D-rendered water droplets of various sizes. A faint, circular watermark logo is visible in the upper center of the page.

Thank you for the attention