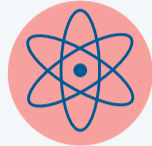




NUTRITION & CANCER

The IAEA supports Member States in using **nuclear nutrition techniques** throughout the stages of **cancer** to inform **prevention** programmes and guide patient **nutrition care** during **treatment** and beyond.

Nuclear Techniques used for nutrition-related assessment in cancer



Stable isotopes

- Energy expenditure
- Body composition
- Gut function and infection
- Breast feeding



DXA scan

- Body composition
- Bone density



CT scan

- Body composition



PREVENTION » DETECTION » DIAGNOSIS » TREATMENT



AROUND **30-50%** OF CANCER CASES ARE **PREVENTABLE**



UP TO **80%** OF PATIENTS EXPERIENCE **MALNUTRITION DURING TREATMENT**

Breastfeeding **DECREASES** the risk of **BREAST CANCER** in the mother



H.pylori infection **INCREASES** the risk of **GASTRIC CANCER**



Greater body fatness **INCREASES** the risk of **12 CANCERS**



Being physically active **DECREASES** the risk of **3 CANCERS**



Cancer and its treatment can lead to **MUSCLE WASTING** and/or **FAT GAIN**



Cancer and its treatment can impact **ENERGY EXPENDITURE**



Cancer and its treatment can **INCREASE** the risk of **OSTEOPOROSIS**

