

REGISTRATION FEE

No registration fee is charged.

EXHIBITION

Space will be available for displays and exhibits by commercial vendors during the conference. Interested exhibitors should contact the Scientific Secretariat by 30 April 2022.

CONFERENCE SECRETARIAT

Scientific matters and paper submission

Ms Diana Paez

Ms Miriam Mikhail Lette

Nuclear Medicine and Diagnostic Imaging
Section

Division of Human Health

Email: imic2022@iaea.org

Administration and organization

Ms Julie Zellinger

Conference Services Section

International Atomic Energy Agency

Vienna International Centre

PO Box 100 1400 Vienna, Austria

Tel.: +43 1 2600 21314 Fax: +43 1 2600 7

Email: Conference.Contact-Point@iaea.org

CONFERENCE WEB PAGE

Detailed information on administrative procedures including participation, submission of papers, registration and grants, is provided on the conference web page:

<https://www.iaea.org/events/imic2022>

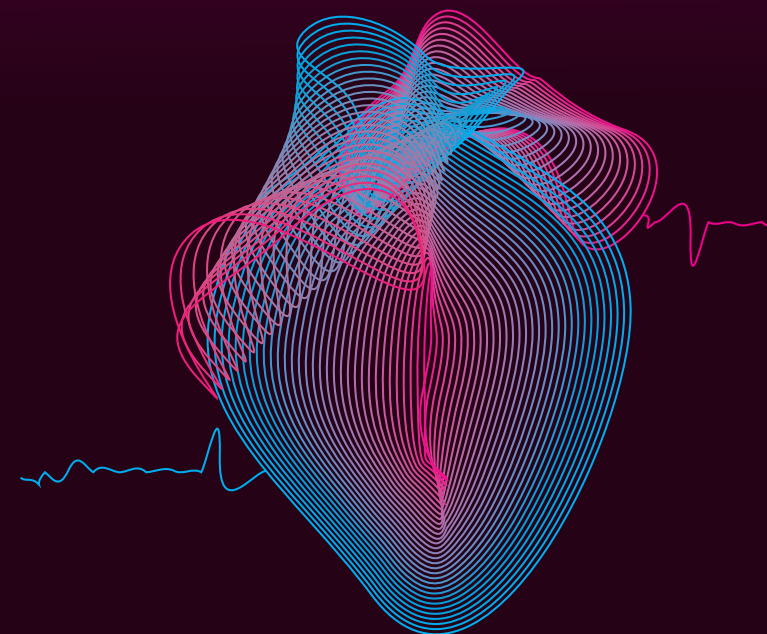
Please include reference number IAEA-CN-304 in all communications.



**International Conference on
Integrated Medical Imaging
in Cardiovascular Diseases**

13 – 16 December 2022

**IAEA Headquarters
Vienna, Austria**



#IMIC2022

CN-304



IAEA
International Atomic Energy Agency
Atoms for Peace and Development

BACKGROUND

In 2022, the International Atomic Energy Agency (IAEA) will hold the International Conference on Integrated Medical Imaging in Cardiovascular Diseases (IMIC-2022), building on the success of the IMIC-2013 and IMIC-2016 conferences. Non-communicable diseases (NCDs) are steadily increasing both in developed and developing countries. Cardiovascular diseases (CVDs) are a dominant subgroup of NCDs and account for the highest proportional mortality among all NCDs. Consequently, CVDs rank among the main priorities of health care systems of many IAEA Member States. Identifying appropriate management strategies is of the utmost importance, as it was estimated by the World Health Organization (WHO) that more than 23 million people will die annually due to CVDs by 2030. The situation is particularly alarming in low- and middle-income countries, as 80% of the mortality burden is borne by such countries.

Medical imaging, including molecular nuclear medicine, is extremely important in that it offers strategic advantages in both diagnostic and therapeutic decision-making. It provides invaluable inputs for different stages of CVD management including diagnosis, staging, treatment, prognosis and follow-up. Medical imaging includes techniques such as single photon emission computed tomography (SPECT), positron emission tomography (PET), echocardiography, computed tomography (CT) and magnetic resonance imaging (MRI). These techniques represent very useful tools to understand the pathology of individual patients in detail and can therefore serve to facilitate specifically tailored clinical management. Each imaging modality has its advantages and limitations which need to be understood properly by health care professionals dealing with CVDs. Given their clinical utility, integrating these techniques into the health care systems

of Member States can provide an invaluable contribution to improving CVD management. Many Member States are already actively using, have recently implemented, or are planning to acquire relevant medical imaging techniques.

In order to follow up on the most recent advances in the use of medical imaging in the management of CVDs and to improve patient management, support professional development, and strengthen the capacities of Member States, it is proposed to hold IMIC-2022.

OBJECTIVE

The conference will cover trends spanning the spectrum of activities related to the use of nuclear medicine and diagnostic imaging in CVDs with the following objectives:

- To review the status of evidence-based recommendations for the use of different imaging modalities in the management of CVDs including SPECT, PET, echocardiography, CT and MRI;
- To review the latest advances and developments in cardiac imaging;
- To reflect on the importance and future of integrated cardiovascular imaging approaches;
- To deliver supportive 'know-how' via continuing medical education programmes in the field, including information on the relative merits and limitations of each imaging modality;
- To reflect on the impact of COVID-19 on the diagnosis of heart conditions, and on the role of medical imaging in the assessment of cardiovascular complications due to COVID;
- To interact with all professionals involved in the management of CVDs and provide them with state-of-the-art information on cardiac imaging; and

- To identify challenges and trends, as well as the role of the IAEA and other professional organizations in addressing these.

AUDIENCE

This conference will give an opportunity to review the exciting latest developments in the field of integrated medical imaging as applied to CVDs. The target audience comprises:

- Nuclear medicine physicians
- Radiologists
- Cardiologists
- Radiochemists/Radiopharmacists
- Medical physicists
- Technologists/Radiographers
- Other practitioners and scientists working in all aspects of cardiac imaging.

KEY DEADLINES

- | | |
|----------------------|---|
| 30 April 2022 | Submission of abstracts, including Forms A and B, through the InTouch+ platform |
| 30 April 2022 | Submission of grant applications (Form C) through the InTouch+ platform |
| 31 July 2022 | Notification of acceptance of abstracts |
| No deadline | Registration only (submission of Form A) through the InTouch+ platform |