

# **Current and past situation of disaster area**

Challenges forward reconstruction of agriculture in Fukushima  
**【Changes of the challenges felt by the speaker】**



**Yuzo Mampuku**

**Central Region Agricultural Research Center, Biomass Utilization Group, NARO**  
**(E-mail: [manpuku@affrc.go.jp](mailto:manpuku@affrc.go.jp))**

## Three of a major disaster



**Earthquake, tsunami and nuclear power plant accident**  
**Three are difficult disaster that has affected**

### **From 2011 May**

- Ministry of Agriculture, Forestry and Fisheries Technology Conference
- Secretariat Technology development in charge of radioactive material removal

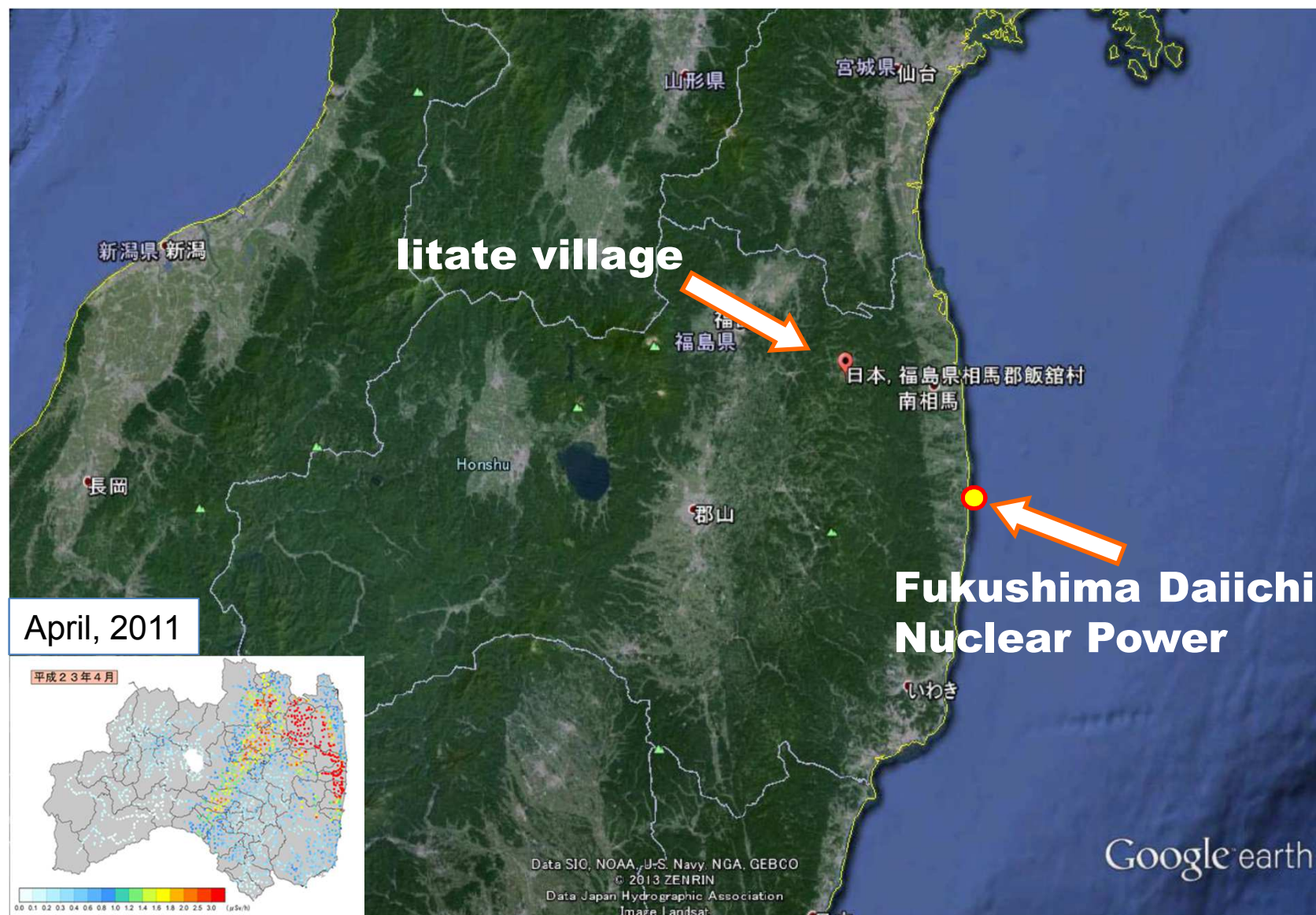
### **From 2012 April**

#### **Fukushima Prefecture litate reconstruction Policy Division work**

- Farmland decontamination technology development
- Restoration of agricultural land after decontamination
- Study of the incineration facility, local to the location description
- Risk communication
- Planning of solar power generation business
- Residents briefings and meetings, etc.
- Reputational damage control seminars across the country
- Meeting with Honda's in the relevant testing and research



# Position of the litate village and the Fukushima Daiichi Nuclear Power



# Back up Fukushima by Offering Support Both for Early Return and for Starting New Lives



## 1. Lifting of Evacuation Orders and Enhancement of Initiatives for Evacuees' Returning Home

(Targeting Area1 and Area2)

- (i) Measures to ensure safety and security (reduction of radiation exposure and health consultation)
- (ii) Additional compensation necessary and sufficient for evacuees to return home
- (iii) Development of an environment for evacuees' returning home using the Grants (¥160 Billion) to Accelerate Revitalization of Fukushima
- (iv) Decontamination work in cooperation with the move toward the reconstruction and further efforts after completing the decontamination work as planned at present



Realization of the Lifting of evacuation orders in consultation with local communities

## 2. Enhancement of Support for Evacuees' Starting New Lives

(Targeting Area3)

- (i) Additional compensation necessary and sufficient for evacuees to start new lives
- (ii) Development of reconstruction bases within and outside of the areas
- (iii) Consideration of future plans for the creation of communities and decontamination, etc. based on decontamination model projects, etc.

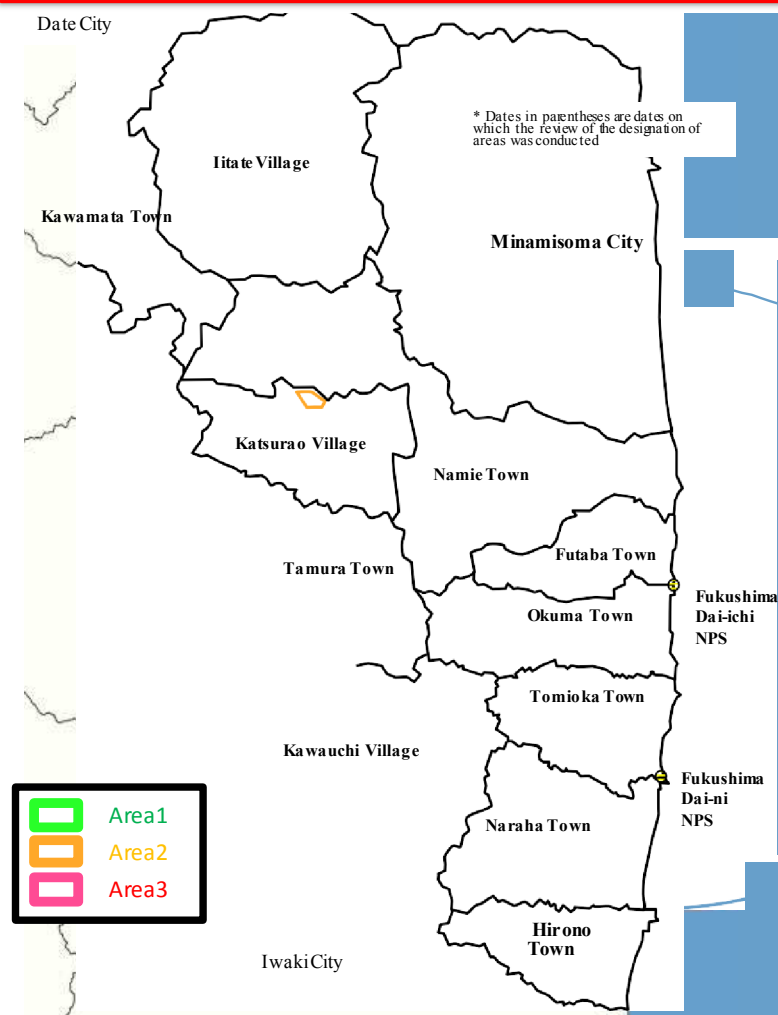


Consideration of concrete medium- and long-term future visions covering a wide area, together with local communities

"Areas to which evacuation orders are ready to be lifted" [Area1]

"Areas in which the residents are not permitted to live" [Area2]

"Areas where it is expected that the residents have difficulties in returning for a long time" [Area3]

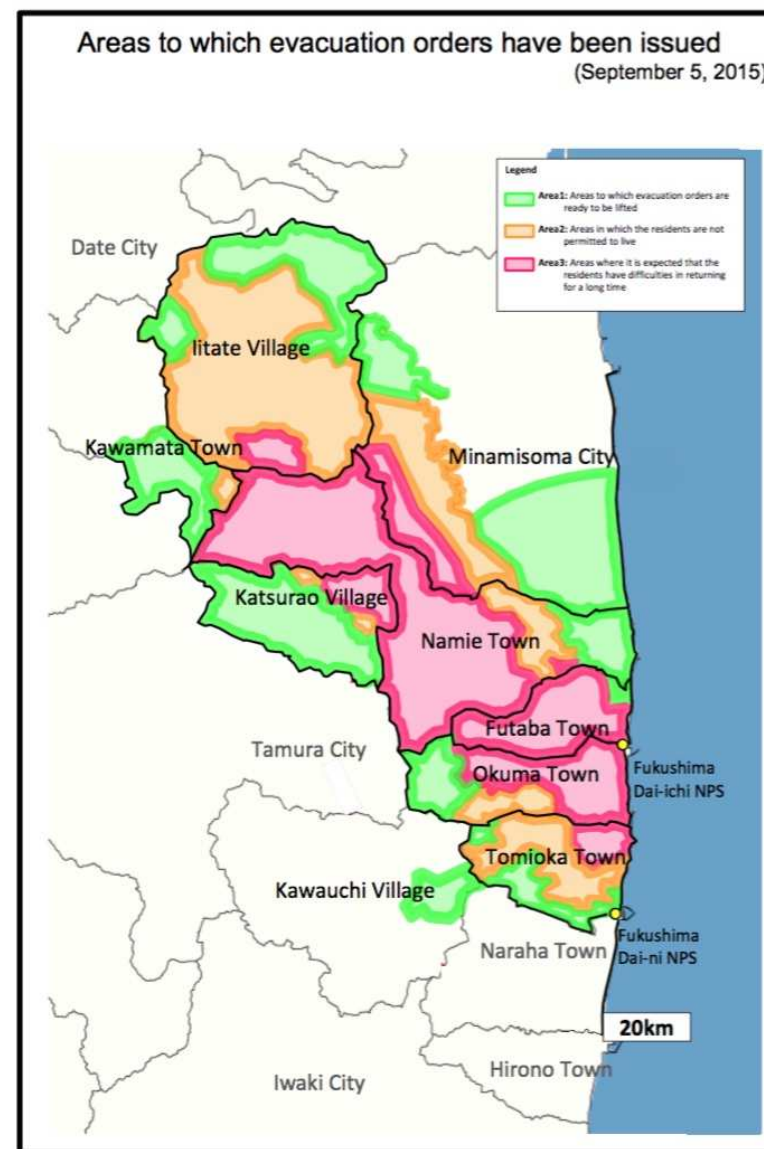
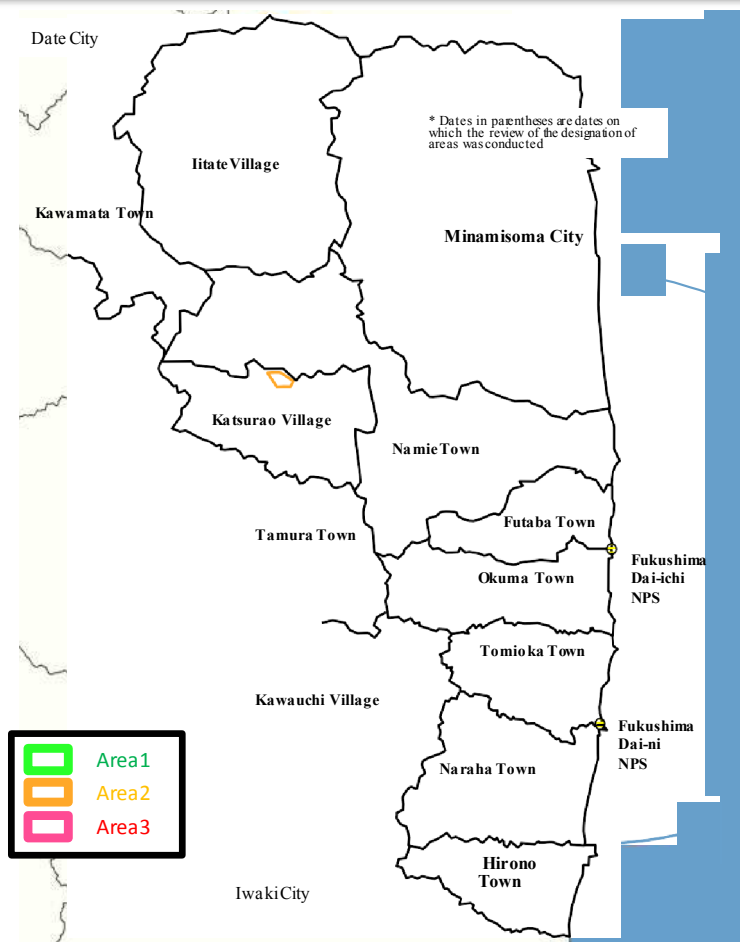


# Areas to which evacuation orders have been issued

“Areas to which evacuation orders are ready to be lifted” [Area1]

“Areas in which the residents are not permitted to live” [Area2]

“Areas where it is expected that the residents have difficulties in returning for a long time” [Area3]



## (in the case of Fukushima Prefecture Iitate)

- March 11 Tohoku-Pacific Ocean earthquake
- March 12, 5:00 am 10km radius of the evacuation instruction range from the primary
- March 12, 6 pm Expand the evacuation instruction range from the primary to the 20km radius
- March 14, 11 am The first nuclear power plant Unit 3 hydrogen explosion Fukushima
- March 15, 11 am Specified in the sheltering areas in radius 30km from the nuclear power plant
- April 11, 2011 It announced the planned evacuation area of setting policy
- April 12 Determine the send-off of crop planting
- April 22 Specified in the planned evacuation zone (to the whole village evacuation)
- June 22 Iitate village office Iino branch office (whole village evacuation completed)



# The passage of time from the earthquake

(in the case of Fukushima Prefecture litate)



**Feelings of the residents?**

- ***Anyway residents information is wanted.***
- ***3 months and it felt more abandoned.***
- ***Government agencies have lost their trust.***



## Problems that residents had

### Changes of the challenges felt by the speaker



- 2011 Radiation dose increases, evacuation, secure residence year
- 2012 Decontamination technology development,  
livelihood security, property security
- 2013 Effect of decontamination
- 2014 Storage of large amounts of decontamination waste
- 2015 Prolonged evacuation life
- 2016 Age, gender, by region feedback consciousness



## Problem that government has faced

### Changes of the challenges felt by the speaker

---



2011. Radiation dose increases, confirmation of evacuation contacts, explosive response year

2012. Office staff, but the person is also a victim, must continue to support the victims.

2013. Temporary storage secure, processing of combustible materials incineration of decontamination waste, groove between the local government cooperation

2014. Development of along the return assistance plan

2015. Life support in the evacuation destination, municipality image after feedback

2016. Age, gender, of the feedback faced by local support

# Continuous apologies residents briefings by government

(in the case of Fukushima Prefecture Iitate)

除染廃棄物の減容化実験  
飯舘村  
国に中止求める  
無断で公社敷地に「理解得られぬ」

除染で発生する廃棄物の減容化実験のため、国が飯舘村で刈り取った草を住民に無断で同村宮内行政区にある村振興公社敷地に運んでいた問題で、村は二十四日、住民の理解を得られないとして実験を中止するよう国に求めることを決めた。草は公社から同村小宮行政区内の除染廃棄物保管所に移される。宮内行政区は同日、対応を協議するために宮内公会堂で臨時総会を開き、国に搬入を許可した。

村によると、国が同村長泥と小宮、草野の三行政区の農地で行ったモデル除染で刈った草数百点を五月下旬から公社敷地に運搬した。乾燥させて減容化する実験が七月から始まる予定だった。公社を選んだのは、敷地内の牛舎が雨を防いで乾燥に適していたためとされている。運ばれた草の中には、高線量地域の長泥行政区内の草も含まれていた。

門馬副村長は「国の減容化実験は他の手法でも取り組んでいると聞く。今回の実験中止が除染作業に与える影響はほとんどない」としている。

社会 福島民報

除染で発生する廃棄物の減容化実験のため、国が飯舘村で刈り取った草を住民に無断で同村宮内行政区にある村振興公社敷地に運んでいた問題で、村は二十四日、住民の理解を得られないとして実験を中止するよう国に求めることを決めた。草は公社から同村小宮行政区内の除染廃棄物保管所に移される。宮内行政区は同日、対応を協議するために宮内公会堂で臨時総会を開き、国に搬入を許可した。

村によると、国が同村長泥と小宮、草野の三行政区の農地で行ったモデル除染で刈った草数百点を五月下旬から公社敷地に運搬した。乾燥させて減容化する実験が七月から始まる予定だった。公社を選んだのは、敷地内の牛舎が雨を防いで乾燥に適していたためとされている。運ばれた草の中には、高線量地域の長泥行政区内の草も含まれていた。

門馬副村長は「国の減容化実験は他の手法でも取り組んでいると聞く。今回の実験中止が除染作業に与える影響はほとんどない」としている。

対応の不備を住民に謝罪する門馬副村長





(in the case of Fukushima Prefecture litate)











**Namie rice cultivation(2014.6)**



**2011 cultivation test results (10a equivalent)**

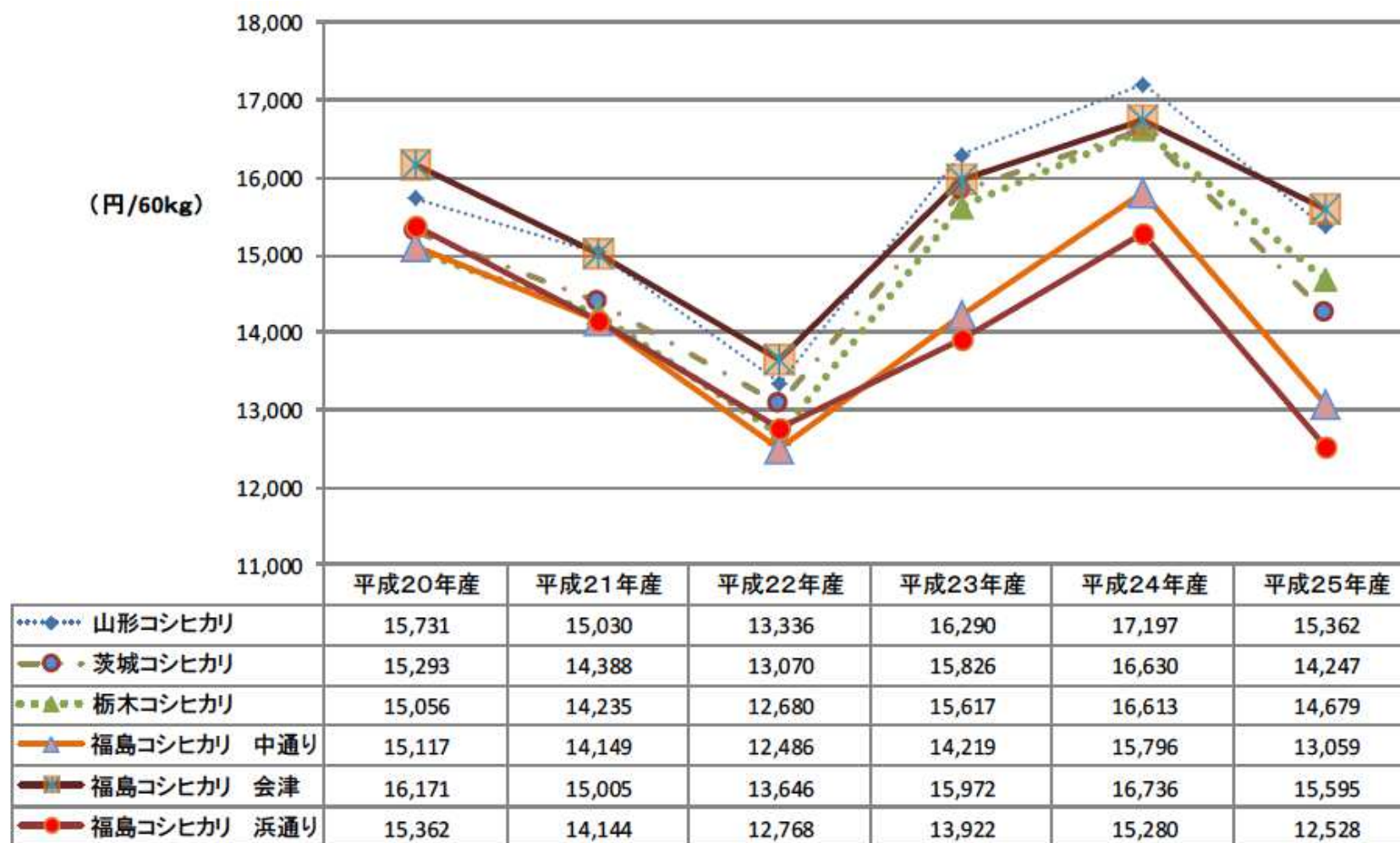
**Akitakomachi : 530kg**

**Hitomebore : 410kg**

**About cesium concentration of brown rice 20 Bq / kg**

**<Reference> 2010 litate village of rice average yield: 519 kg / 10a**

# Fukushima Prefecture rice relative transaction price



Ministry of Agriculture, Forestry and Fisheries data



# First shipment of strawberries in Iitate



"We are testing"

"It is safe."

**The convenience of the  
producers**

"Origin notation"

"Inspection numeric format"

**So that consumers can  
choose**



# Thank you for your attention.

**食わっせ、ふくしま米**

福島県川俣町、飯館村、楢葉町、浪江町の除染が終了した水田から、おいしいお米が収穫されました。

ご協力頂いた農家の水田における除染や収穫前対策の結果、基準値<sup>※</sup>を大きく下回る安全なお米です。是非この機会に、ふくしまのお米を食べて応援しましょう！

**11月19日(木) ～ 無くなり次第終了**

中央合同庁舎 第5号館	大倉庫 / そばうどん店「日暮庵」(地下1階) 中華料理「龍華」(2F)
----------------	---

協力：川俣町 飯館村 楢葉町 浪江町  
協力：農林水産省 農林水産技術会議事務局

主催：環境省 提供：福島県川俣町 福島県飯館村 福島県楢葉町 福島県浪江町 協力：農林水産技術会議事務局

