

Sea Area Monitoring

October 21, 2014

Nuclear Regulation Authority (NRA), Japan

Sea area within 2km radius from the NPS



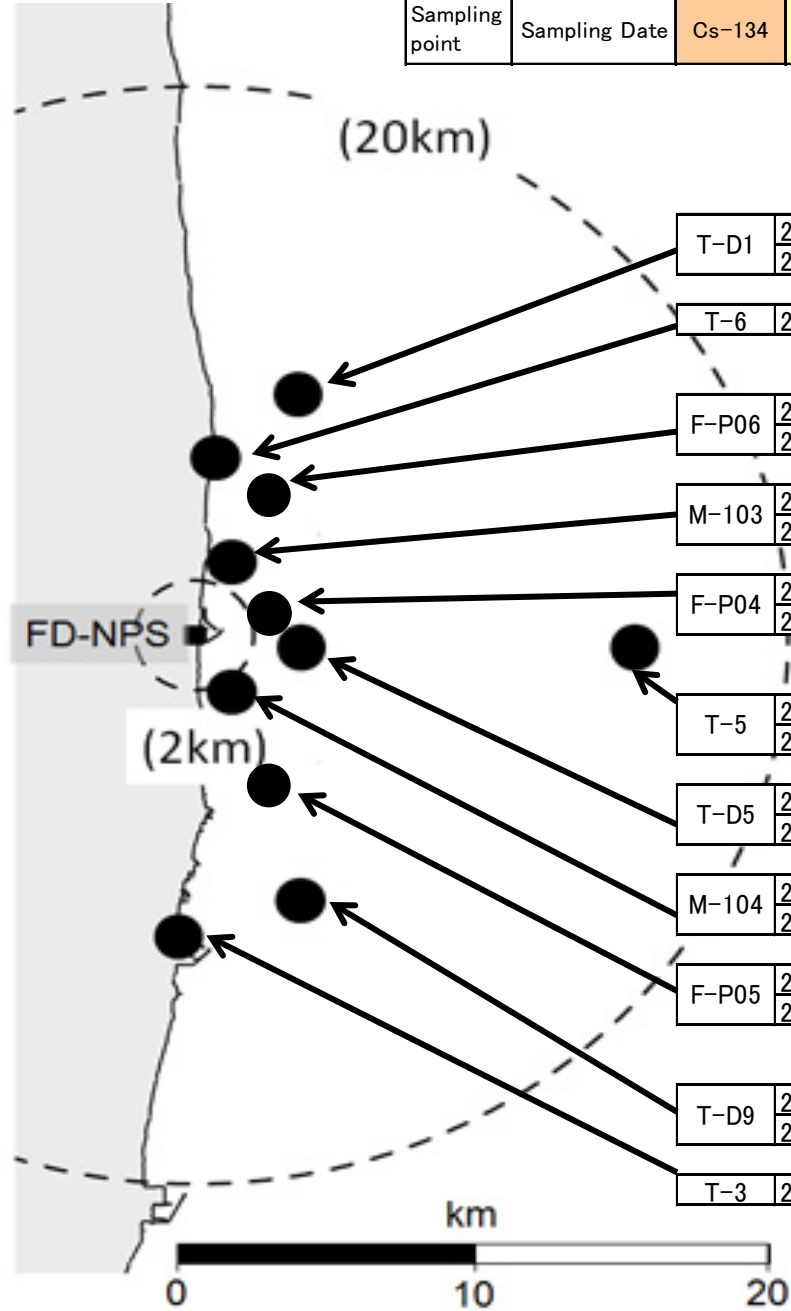
Sea area between 2-20km radius from the NPS (1)

Sampling point	Sampling Date	Cs-134	Cs-137	total β	H-3	Sr-90	total α	Pu-238	Pu-239+Pu-240	S	S:2m below sea level
----------------	---------------	--------	--------	---------------	-----	-------	----------------	--------	---------------	---	----------------------

Sea water radioactivity (Bq/L):

ND: under detection limits; Numbers in parentheses: detection limits

*1: Total β : including K-40 *2: Total β : excluding K-40

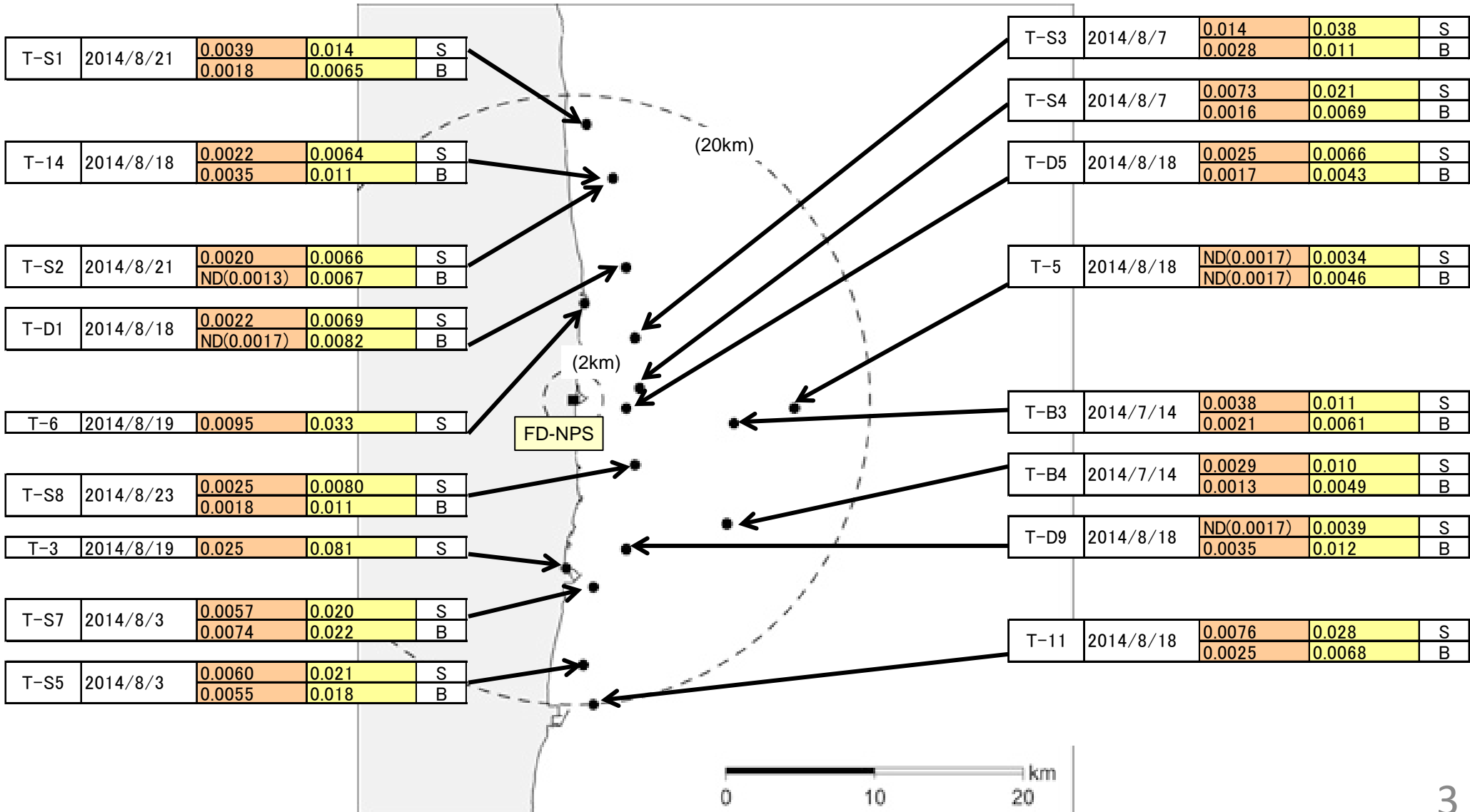


T-D1	2014/8/4	ND(0.0015)	0.0059	ND(17)*1	ND(0.32)	ND(0.01)	ND(2.0)			S
	2014/4/1	0.0027	0.0086	ND(17)*1	ND(0.30)	ND(0.009)	ND(1.9)	ND(5.3 × 10 ⁻⁶)	(5.7+1.7) × 10 ⁻⁶	S
T-6	2014/8/19	0.0095	0.033	ND(17)*1	ND(0.32)					S
F-P06	2014/7/7	ND(0.056)	ND(0.051)	0.02*2	ND(0.42)	0.003		In progress	In progress	S
	2014/6/16	ND(0.055)	ND(0.055)	0.03*2	ND(0.40)	0.001		ND(1.4 × 10 ⁻⁵)	ND(1.3 × 10 ⁻⁵)	S
M-103	2014/8/19	0.0025	0.0090		0.11	In progress				0.5m
	2014/6/17	0.010	0.033		0.13	0.0019				0.5m
F-P04	2014/7/7	ND(0.065)	ND(0.065)	0.04*2	ND(0.42)	0.004		In progress	In progress	S
	2014/6/16	ND(0.074)	ND(0.053)	0.03*2	ND(0.41)	0.004		ND(6 × 10 ⁻⁶)	6 × 10 ⁻⁶	S
T-5	2014/8/5	ND(0.0017)	0.0037	ND(17)*1	ND(0.32)	ND(0.01)	ND(2.0)			S
	2014/4/2	ND(0.0014)	0.0044	ND(17)*1	ND(0.30)	ND(0.009)	ND(1.9)	ND(5.5 × 10 ⁻⁶)	(8.3+2.1) × 10 ⁻⁶	S
T-D5	2014/8/4	0.0019	0.0079	ND(17)*1	ND(0.32)	ND(0.01)	ND(2.0)			S
	2014/4/1	0.0058	0.012	ND(17)*1	ND(0.30)	ND(0.009)	ND(1.9)	ND(5.2 × 10 ⁻⁶)	ND(4.5 × 10 ⁻⁶)	S
M-104	2014/8/20	0.0059	0.019		0.13	In progress				0.5m
	2014/6/16	0.029	0.081		0.19	0.030				0.5m
F-P05	2014/7/7	ND(0.056)	ND(0.059)	0.04*2	ND(0.41)	0.006		In progress	In progress	S
	2014/6/16	ND(0.060)	ND(0.076)	0.03*2	ND(0.41)	0.001		ND(6 × 10 ⁻⁶)	6 × 10 ⁻⁶	S
T-D9	2014/8/5	0.0021	0.0075	ND(17)*1	ND(0.31)	ND(0.01)	ND(2.0)			S
	2014/4/2	0.0041	0.010	ND(16)*1	ND(0.30)	ND(0.008)	ND(1.9)	ND(4.7 × 10 ⁻⁶)	ND(4.5 × 10 ⁻⁶)	S
T-3	2014/8/19	0.025	0.081	ND(17)*1	0.40					S

Sea area between 2-20km radius from the NPS (2)

Sampling point	Sampling Date	Cs-134	Cs-137	S/B	S:2m below sea level B:2-3m above sea bottom
----------------	---------------	--------	--------	-----	---

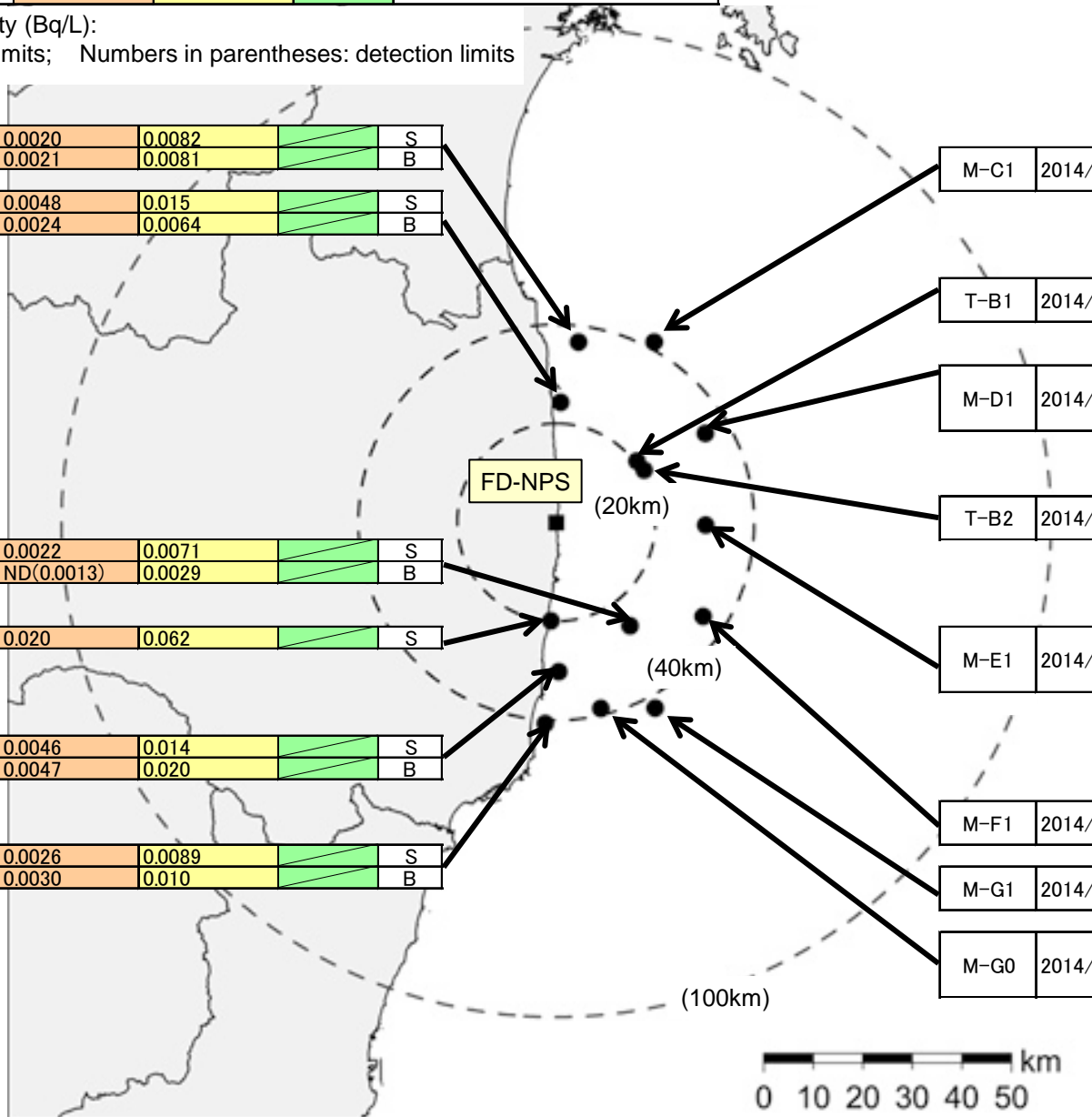
Sea water radioactivity (Bq/L):
 ND: under detection limits; Numbers in parentheses: detection limits



Sea area between 20-100km radius from the NPS(1)

Sampling point	Sampling Date	Cs-134	Cs-137	Sr-90	S/B	
					S:2m below sea level	B:2-3m above sea bottom
Depth(m) from sea level						

Sea water radioactivity (Bq/L):
 ND: under detection limits; Numbers in parentheses: detection limits



T-MA	2014/7/24	0.0020	0.0082		S
		0.0021	0.0081		B
T-13-1	2014/7/24	0.0048	0.015		S
		0.0024	0.0064		B

M-C1	2014/5/13	0.0013	0.0039		1m
		0.0015	0.0050		46m

T-B1	2014/8/20	ND(0.0013)	0.0031		S
		ND(0.0013)	0.0048		B

M-D1	2014/5/20	0.0017	0.0048		1m
		0.0016	0.0051		50m
		ND(0.00056)	0.0023		116m

T-B2	2014/8/20	ND(0.0013)	0.0024		S
		ND(0.0013)	0.0043		B

T-7	2014/8/6	0.0022	0.0071		S
		ND(0.0013)	0.0029		B

M-E1	2014/5/17	0.0012	0.0046		1m
		0.00096	0.0036		50m
		ND(0.00059)	0.0020		125m

T-4	2014/8/19	0.020	0.062		S
-----	-----------	-------	-------	--	---

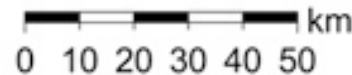
T-12	2014/8/2	0.0046	0.014		S
		0.0047	0.020		B

M-F1	2014/5/17	0.0016	0.0049		1m
		ND(0.00068)	0.0020		133m

T-17-1	2014/8/2	0.0026	0.0089		S
		0.0030	0.010		B

M-G1	2014/5/24	ND(0.00055)	0.0015		1m
		ND(0.00065)	0.0019		129m

M-G0	2014/5/24	ND(0.00055)	0.0017		1m
		ND(0.00064)	0.0028		50m
		0.00068	0.0036		93m

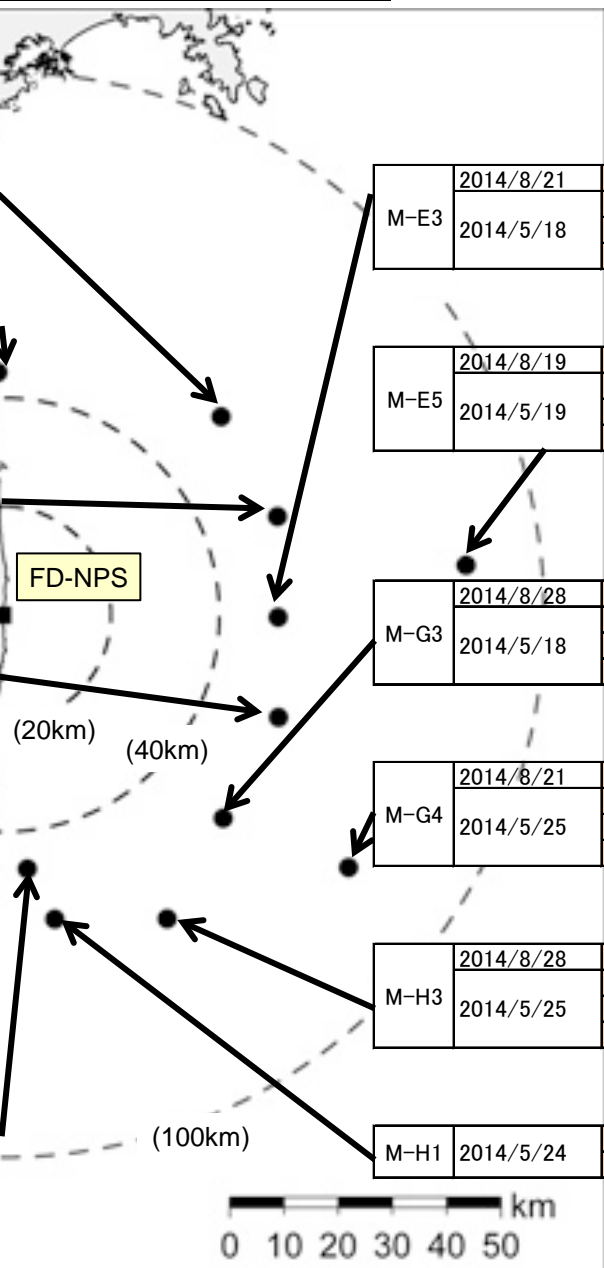


Sea area between 20-100km radius from the NPS(2)

Sampling point	Sampling Date	Cs-134	Cs-137	Total β *	H-3	Sr-90	S/B
							S:2m below sea level B:2-3m above sea bottom
							Depth(m) from sea level

Sea water radioactivity (Bq/L):
 ND: under detection limits; Numbers in parentheses: detection limits
 *Total β : excluding K-40

M-C3	2014/8/16	In progress	In progress	0.021	In progress	In progress	1m
		0.0017	0.0063	0.024	0.11	0.0011	1m
	2014/5/13	0.00071	0.0023				50m
		ND(0.00061)	0.0015				124m
T-22	2014/7/24	0.0025	0.0079				S
		0.0023	0.0086				B
M-D3	2014/8/23	In progress	In progress	0.025	In progress	In progress	1m
		0.0017	0.0061	0.018	0.080	0.0012	1m
	2014/5/16	ND(0.00061)	0.0020				100m
		ND(0.00061)	0.0014				210m
M-F3	2014/8/21	In progress	In progress	0.026	In progress	In progress	1m
		0.0016	0.0048	0.027	0.089	0.0011	1m
	2014/5/18	ND(0.00057)	0.0015				100m
		ND(0.00066)	0.0015				222m
T-18	2014/8/6	0.0027	0.0074				S
		0.0026	0.0073				B
T-20	2014/8/2	0.0015	0.0068				S
		0.0019	0.0077				B
T-M10	2014/8/6	ND(0.0013)	0.0023				S
		ND(0.0013)	0.0038				B



M-E3	2014/8/21	In progress	In progress	0.029	In progress	In progress	1m
		0.0015	0.0038	0.024	0.10	0.00091	1m
	2014/5/18	ND(0.00064)	0.0019				100m
		ND(0.00064)	0.0014				218m
M-E5	2014/8/19	In progress	In progress	0.025	In progress	In progress	1m
		ND(0.00059)	0.0015	0.021	0.076	0.00084	1m
	2014/5/19	ND(0.00056)	0.0018				100m
		ND(0.00075)	0.00062				522m
M-G3	2014/8/28	In progress	In progress	0.022	In progress	In progress	1m
		0.0011	0.0029	0.027	0.076	0.00084	1m
	2014/5/18	ND(0.00056)	0.0016				100m
		ND(0.00064)	0.0016				196m
M-G4	2014/8/21	In progress	In progress	0.024	In progress	In progress	1m
		ND(0.00063)	0.0028	0.024	0.059	0.0011	1m
	2014/5/25	ND(0.00059)	0.0016				100m
		ND(0.00080)	0.00057				645m
M-H3	2014/8/28	In progress	In progress	0.025	In progress	In progress	1m
		ND(0.00060)	0.0021	0.020	0.084	0.0010	1m
	2014/5/25	ND(0.00056)	0.0017				100m
		ND(0.00053)	0.0017				214m
M-H1	2014/8/28	In progress	In progress	0.025	In progress	In progress	1m
	2014/5/24	0.0016	0.0049				121m
		ND(0.00059)	0.0020				

Sea area along and off the coast of Miyagi Prefecture

Sampling point	Sampling Date	Cs-134	Cs-137	Sr-90	S/M/B
----------------	---------------	--------	--------	-------	-------

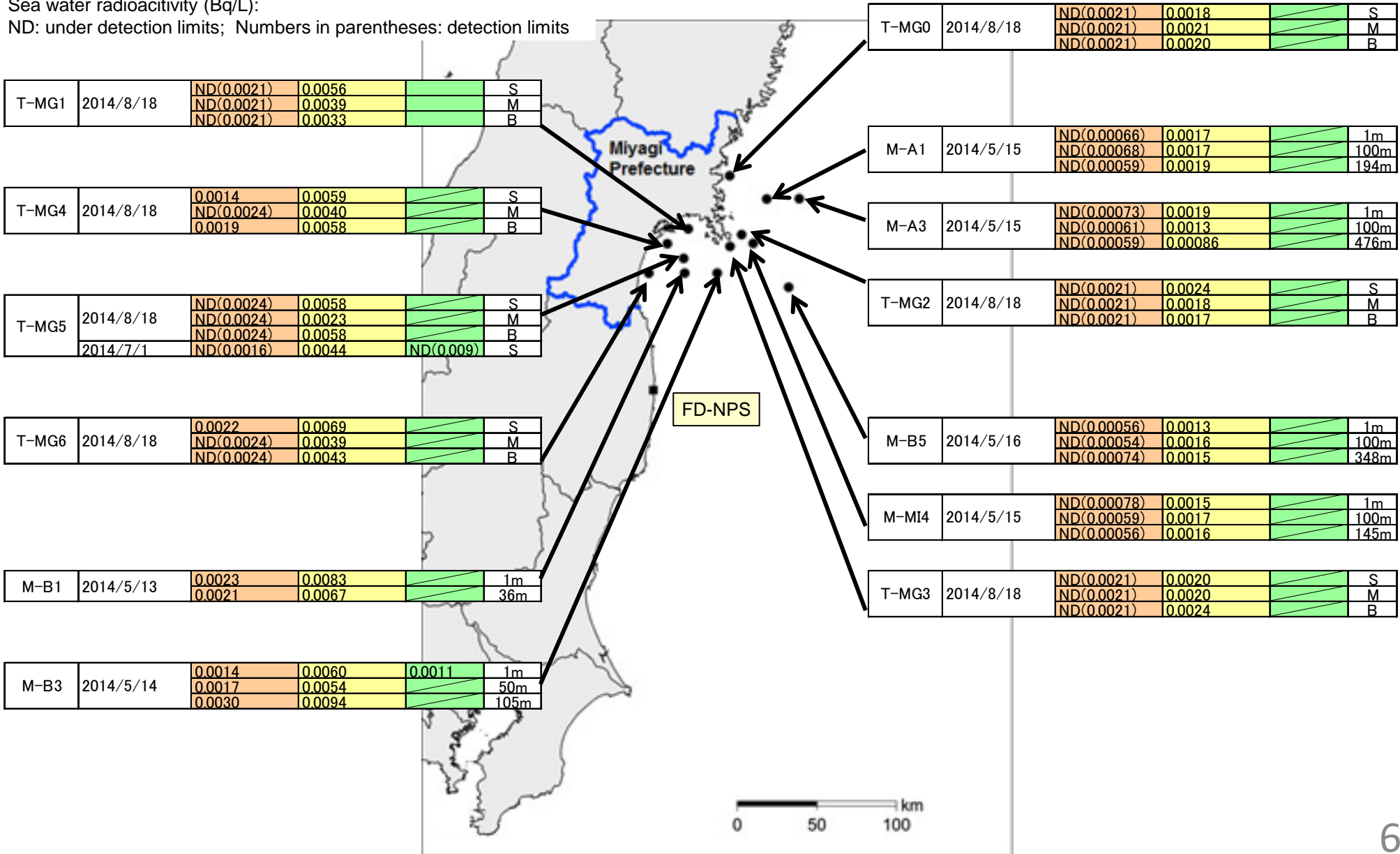
S:2m below sea level

M:between 2m below sea level and 2-3m above sea bottom

B:2-3m above sea bottom

Sea water radioactivity (Bq/L):

ND: under detection limits; Numbers in parentheses: detection limits

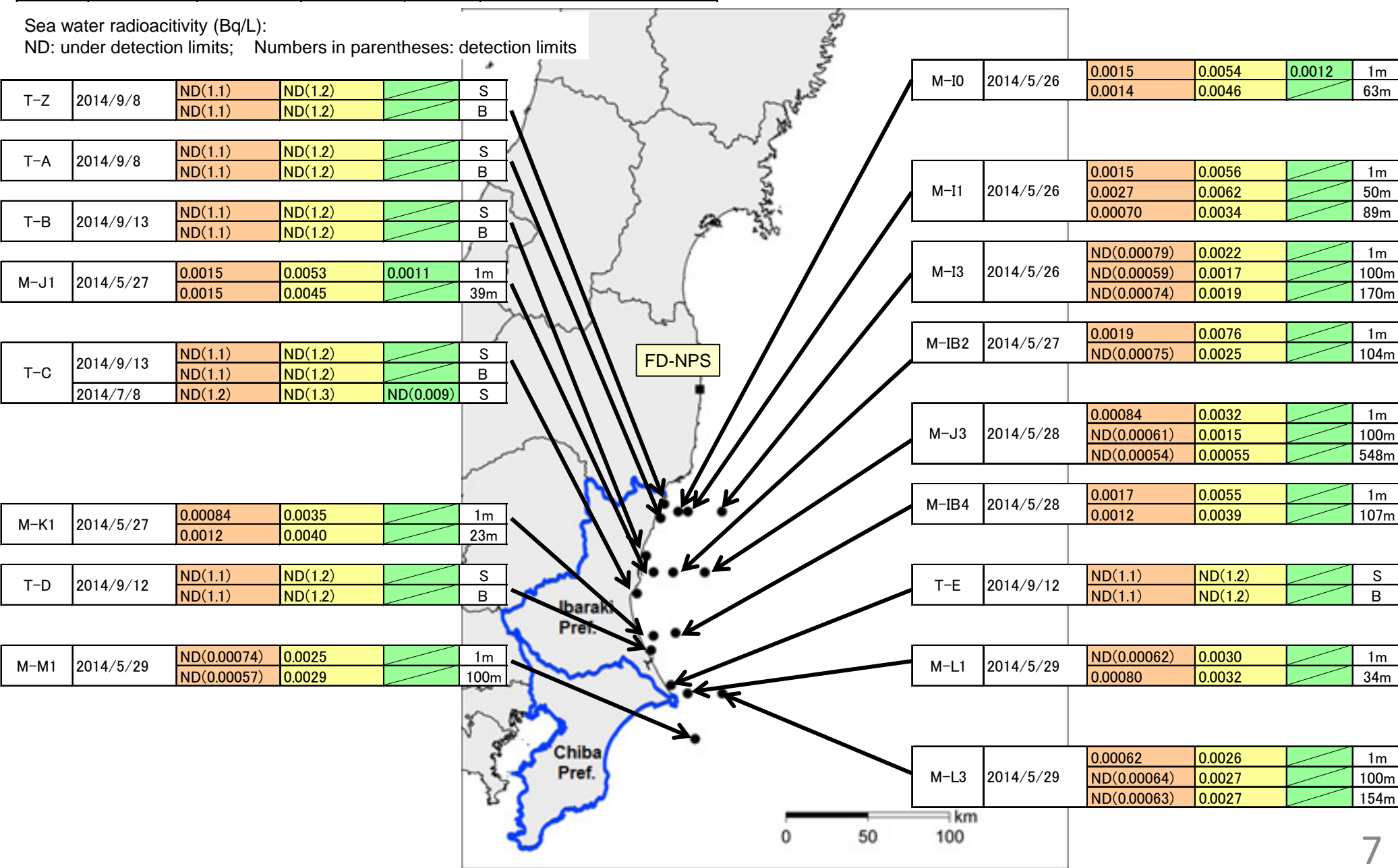


Sea area along and off the coast of Ibaraki Pref. and Chiba Pref.

Sampling point	Sampling Date	Cs-134	Cs-137	Sr-90	S/B	S:2m below sea level B:2-3m above sea bottom	
					Depth(m) from sea level		

Sea water radioactivity (Bq/L):

ND: under detection limits; Numbers in parentheses: detection limits



Open sea off the coast of Eastern Japan

Sampling point	Sampling Date	Cs-134	Cs-137	Depth(m) from sea level
----------------	---------------	--------	--------	-------------------------

Sea water radioactivity (Bq/L):

ND: under detection limits; Numbers in parentheses: detection limits

M-10	2014/6/18	ND(0.00054)	0.0020	1m
		ND(0.00073)	0.0017	100m
		ND(0.00052)	0.0013	200m
		ND(0.00058)	0.0011	300m
		ND(0.00051)	0.00059	500m

M-14	2014/6/19	ND(0.00056)	0.0022	1m
		ND(0.00057)	0.0018	100m
		ND(0.00053)	0.0016	200m
		ND(0.00058)	0.00093	300m
		ND(0.00059)	0.00054	500m

M-19	2014/6/20	0.00095	0.0033	1m
		ND(0.00057)	0.0020	100m
		ND(0.00063)	0.0014	200m
		ND(0.00053)	0.0012	300m
		ND(0.00057)	0.00086	500m

M-20	2014/6/21	0.00067	0.0026	1m
		ND(0.00059)	0.0028	100m
		ND(0.00073)	0.0024	200m
		ND(0.00057)	0.0015	300m
		ND(0.00055)	0.00070	500m

M-25	2014/6/24	ND(0.00057)	0.0016	1m
		ND(0.00055)	0.0019	100m
		0.00069	0.0033	200m
		0.00097	0.0043	300m
		ND(0.00060)	0.0023	500m

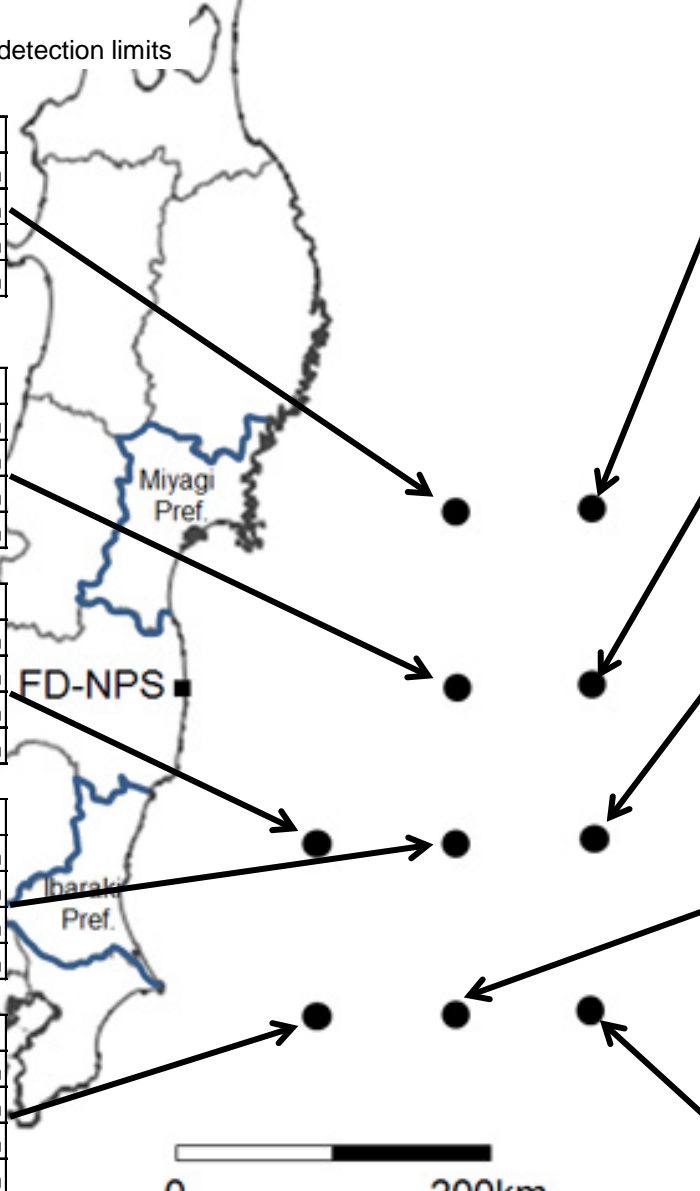
M-11	2014/6/18	0.00062	0.0030	1m
		0.00078	0.0028	100m
		ND(0.00052)	0.0020	200m
		ND(0.00054)	0.0014	300m
		ND(0.00059)	0.0012	500m

M-15	2014/6/19	ND(0.00056)	0.0025	1m
		ND(0.00055)	0.0021	100m
		ND(0.00060)	0.0017	200m
		ND(0.00052)	0.0012	300m
		ND(0.00061)	0.00080	500m

M-21	2014/6/21	ND(0.00057)	0.0020	1m
		ND(0.00056)	0.0029	100m
		0.00063	0.0032	200m
		ND(0.00065)	0.0021	300m
		ND(0.00053)	0.0015	500m

M-26	2014/6/23	ND(0.00056)	0.0022	1m
		ND(0.00069)	0.0031	100m
		0.00099	0.0038	200m
		0.0013	0.0047	300m
		0.00066	0.0032	500m

M-27	2014/6/22	ND(0.00057)	0.0028	1m
		ND(0.00070)	0.0027	100m
		0.0010	0.0033	200m
		ND(0.00056)	0.0035	300m
		0.0011	0.0051	500m



0 200km