

**Sayda Bay  
Regional Treatment and Interim storage Centre**



Energiewerke Nord GmbH

CEG-Meeting : Workshop JAEA

Speaker : Holger Schmidt

Venue : Oxford, England

Date : 05<sup>th</sup> - 07<sup>th</sup> March 2008

1

**Sayda Bay  
Regional Treatment and Interim storage Centre**



Visualisation

2

## Sayda Bay Regional Treatment and Interim storage Centre



Regional centre at Sayda Bay for conditioning and long-term interim storage of radioactive waste

The Sayda Bay radioactive waste storage facility is designed for the dismantling, decontaminating, conditioning and interim storage as well release measuring of radioactive materials and waste.

These are solid, radioactive substances arising from the dismantling of marine vessel sections (nuclear-powered icebreakers and ships for nuclear service) in areas in the north-western region of the Russian Federation, in the course of clean-up of former and existing military bases.

The amount of radioactive waste to be accommodated is estimated to come to 100.000 m<sup>3</sup>.

No nuclear fuel-containing wastes will be conditioned and interim-stored at the Regional Centre.

3

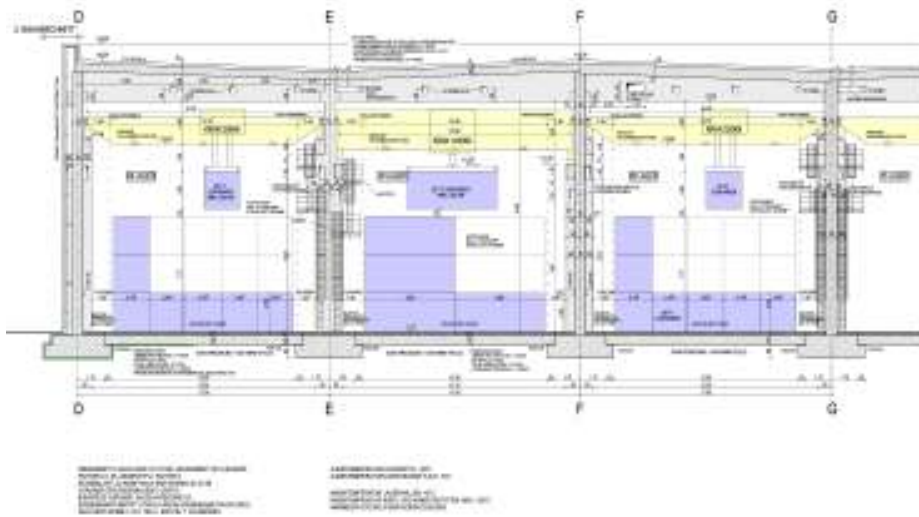
## Sayda Bay Regional Treatment and Interim storage Centre



Storage halls +/- 0,00 m plan

12

**Sayda Bay  
Regional Treatment and Interim storage Centre**



Sectional view of storage hall system

13

**Sayda Bay  
Regional Treatment and Interim storage Centre**

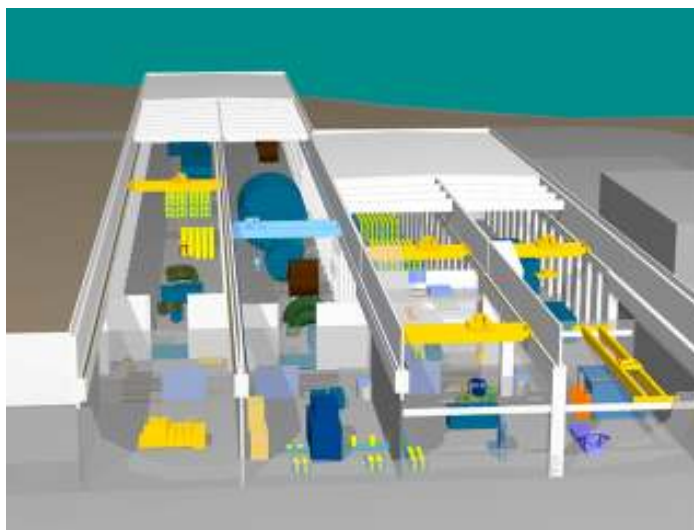
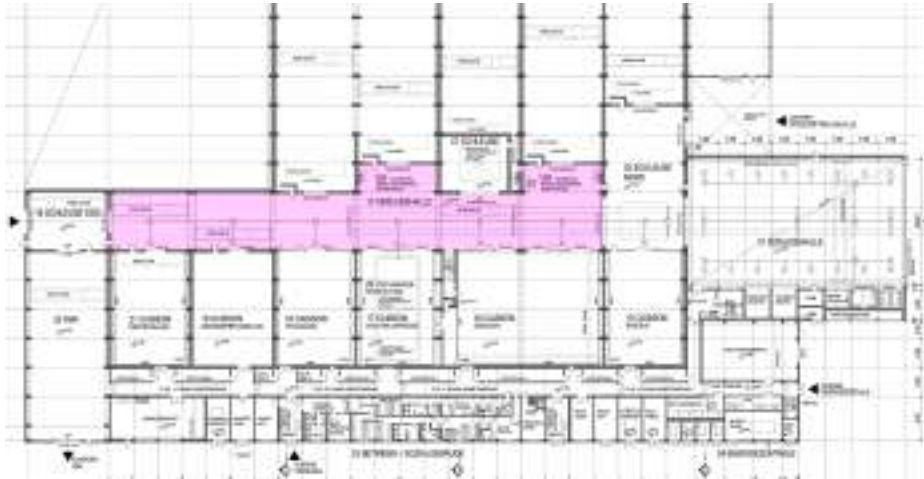


Illustration 3D storage concept

14

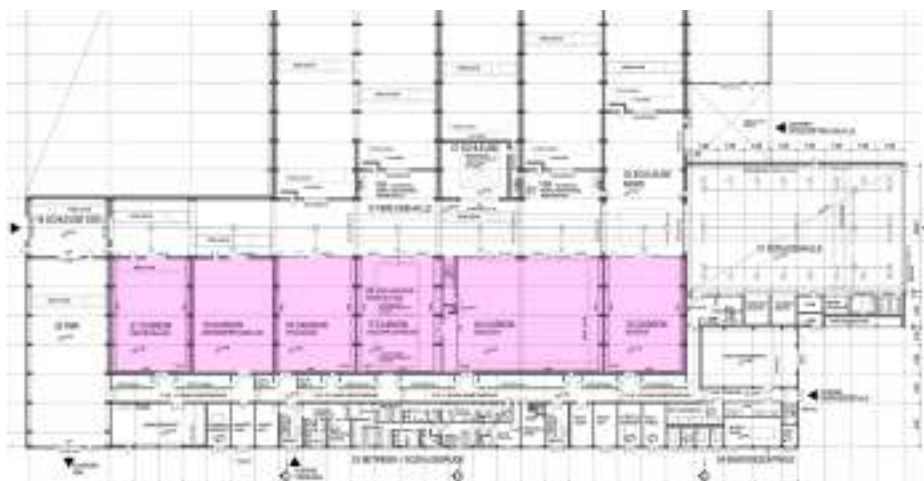
**Sayda Bay  
Regional Treatment and Interim storage Centre**



Loading/unloading hall +/- 0,00 m plan

16

**Sayda Bay  
Regional Treatment and Interim storage Centre**



Conditioning areas +/- 0,00 m plan

18

**Sayda Bay  
Regional Treatment and Interim storage Centre**



Release measuring  
installation

Conditioning area

Section Caissons

**Sayda Bay  
Regional Treatment and Interim storage Centre**



Power house

Office and staff facilities building +/- 0,00 m plan

**Sayda Bay  
Regional Treatment and Interim storage Centre**



Office and staff facilities building + 3,75 m plan

21

**Sayda Bay  
Regional Treatment and Interim storage Centre**



Office and staff facilities building + 7,50 m plan

22

**Sayda Bay  
Regional Treatment and Interim storage Centre**



Power house +/- 0,00 m plan

23

**Sayda Bay  
Regional Treatment and Interim storage Centre**



Power house + 3,75 m plan

24

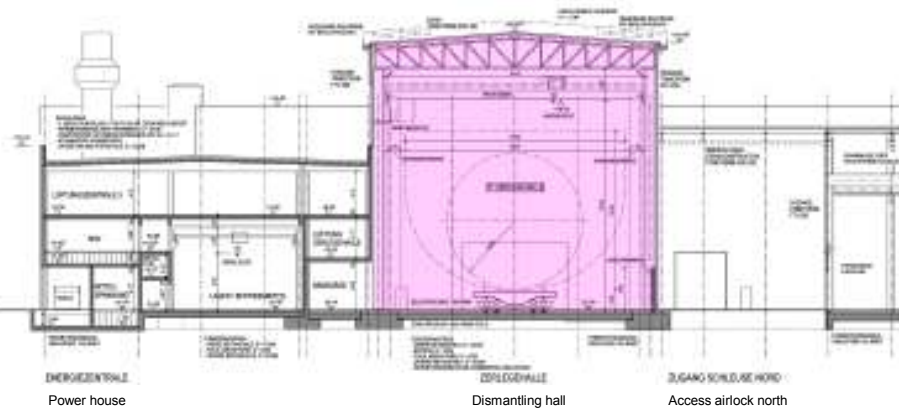
**Sayda Bay  
Regional Treatment and Interim storage Centre**



Dismantling hall +/- 0,00 m plan

25

**Sayda Bay  
Regional Treatment and Interim storage Centre**



Section dismantling hall

26

**Sayda Bay  
Regional Treatment and Interim storage Centre**



Lightweight hall +/- 0,00 m plan

27

**Sayda Bay  
Regional Treatment and Interim storage Centre**



Airlock north +/- 0,00 m plan  
Release measuring installation +/- 0,00 m plan  
Airlock south +/- 0,00 m plan

28

**Sayda Bay  
Regional Treatment and Interim storage Centre**



Aerial view of Sayda Bay

**Sayda Bay  
Regional Treatment and Interim storage Centre**



Thank you for your attention