

22nd CEG Plenary Meeting

Paris 24th of September

**Swedish Programme for Radwaste Management
in NW Russia**

**Roland Turner SSM
Project Manager**

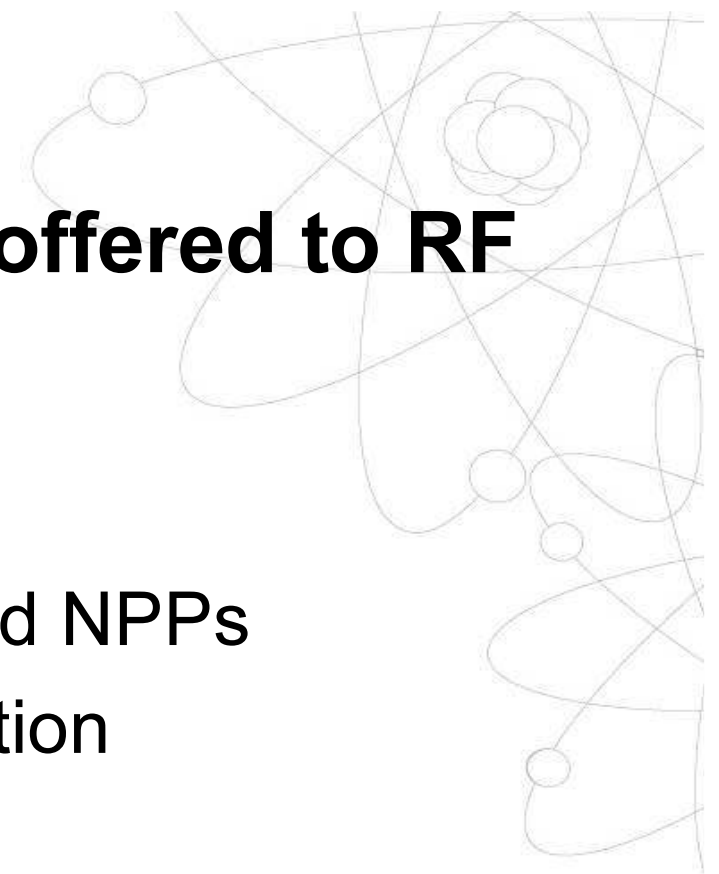


Merger 1 of July of two authorities **SKI+SSI=SSM**

- One reason-simplified licensing of next year's application for construction of a SNF repository
- Assistance to RF: "SSM shall contribute to the strengthening of the radiation protection for man and environment, improve reactor safety and safety in handling SNF and radwaste and develop the national and regional emergency preparedness against radiological and nuclear accidents in NW RF
- Assistance to be continued at least until 2012

Swedish Assistance in RWM offered to RF

- Waste disposal (repositories)
- Waste management at facilities and NPPs
- Modernisation of waste categorisation
- Concept of Nuclear Waste Fund
- Public communication and acceptance



FOUNDATION FOR ENVIRONMENTAL SAFETY
FOR POWER ENGINEERING (IBRAE RAS)

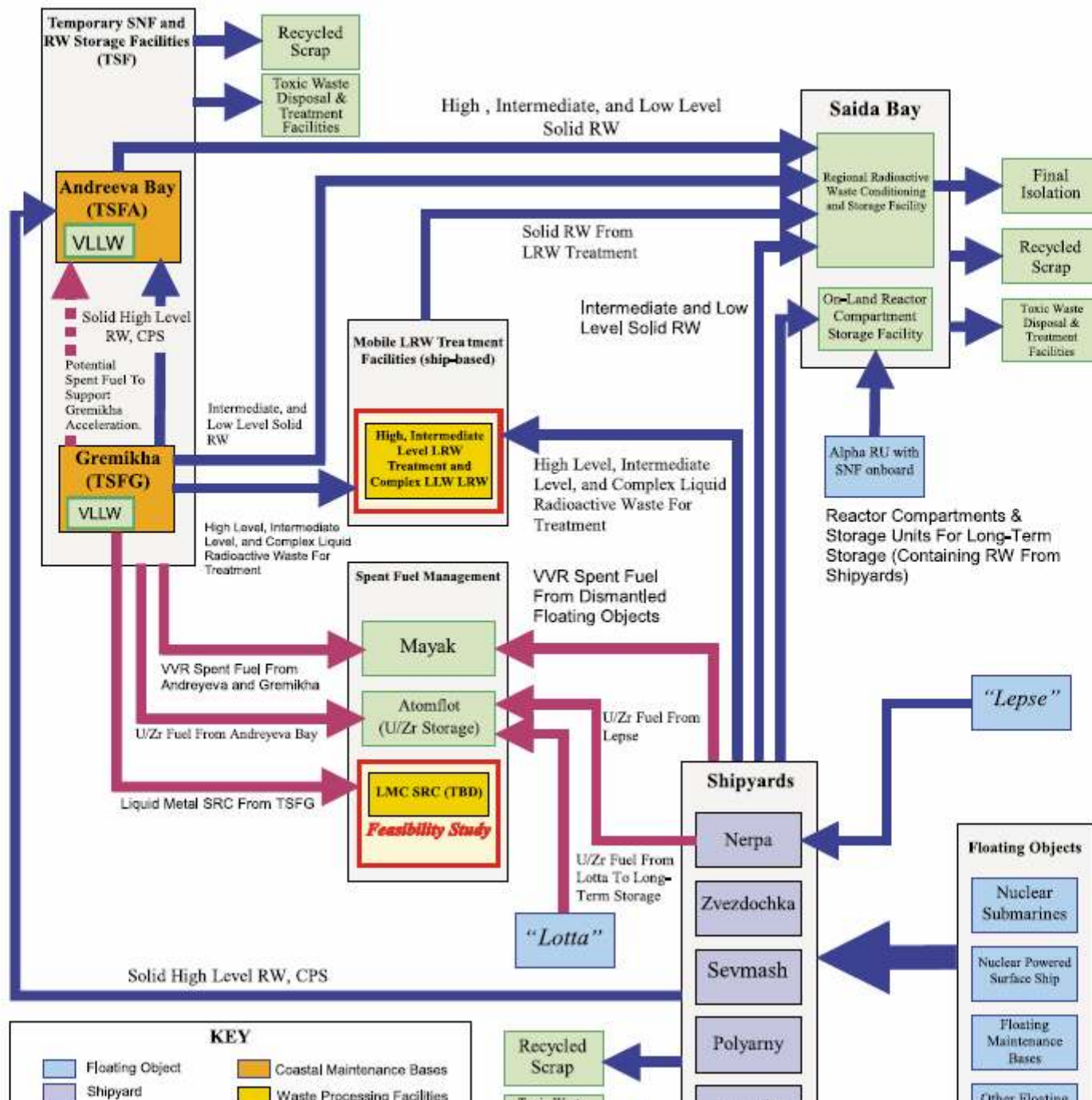
Strategic Master Plan

for Decommissioning the Retired
Russian Nuclear Fleet and Environmental
Rehabilitation of Its Supporting
Infrastructure in Northwest Russia

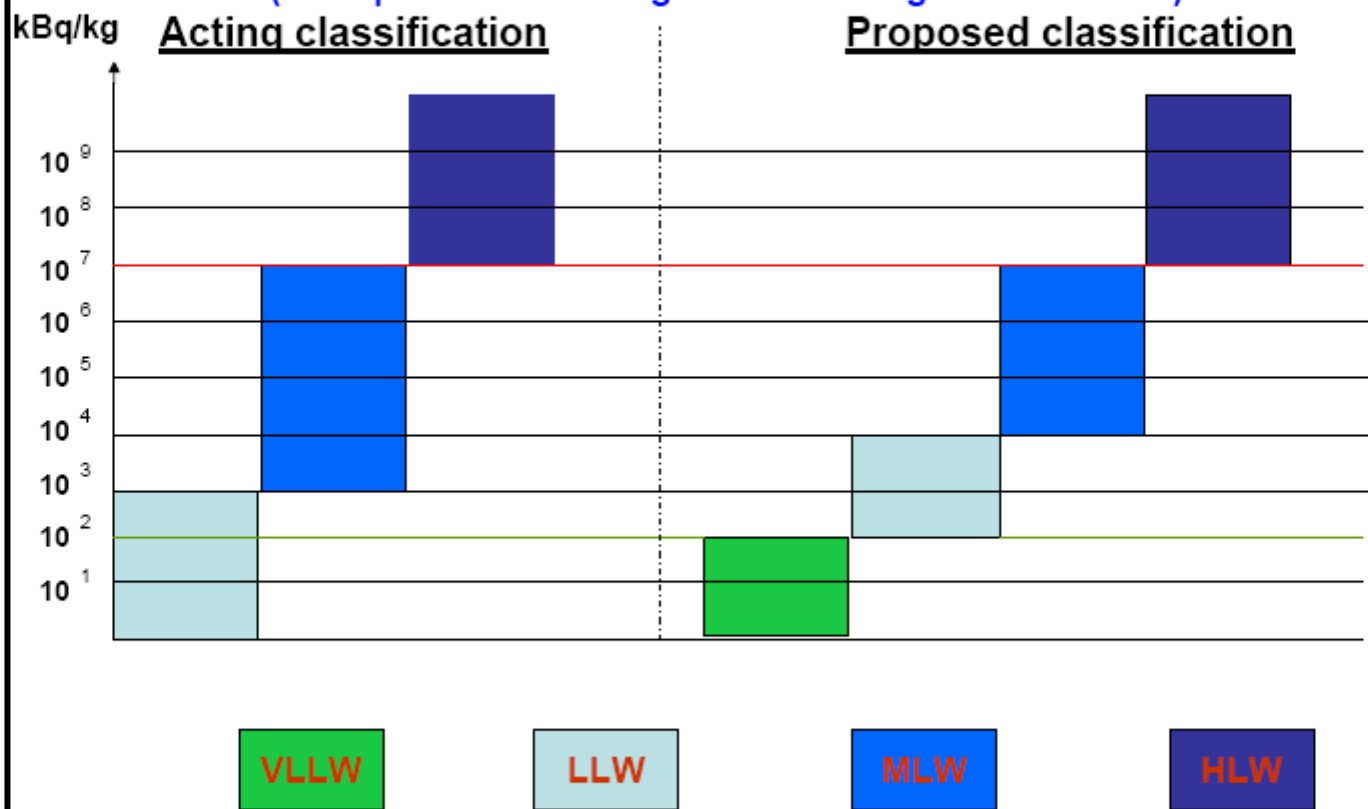
Executive Summary



High-level road map (Figure 1) was produced which maps flow of SNF, RW and LW material across the region.



**PROPOSALS ON INTRODUCING A NEW RW CATEGORY -
VERY LOW-LEVEL WASTE -
TO THE ACTING RW CLASSIFICATION**
(example of beta- and gamma-emitting radionuclides)

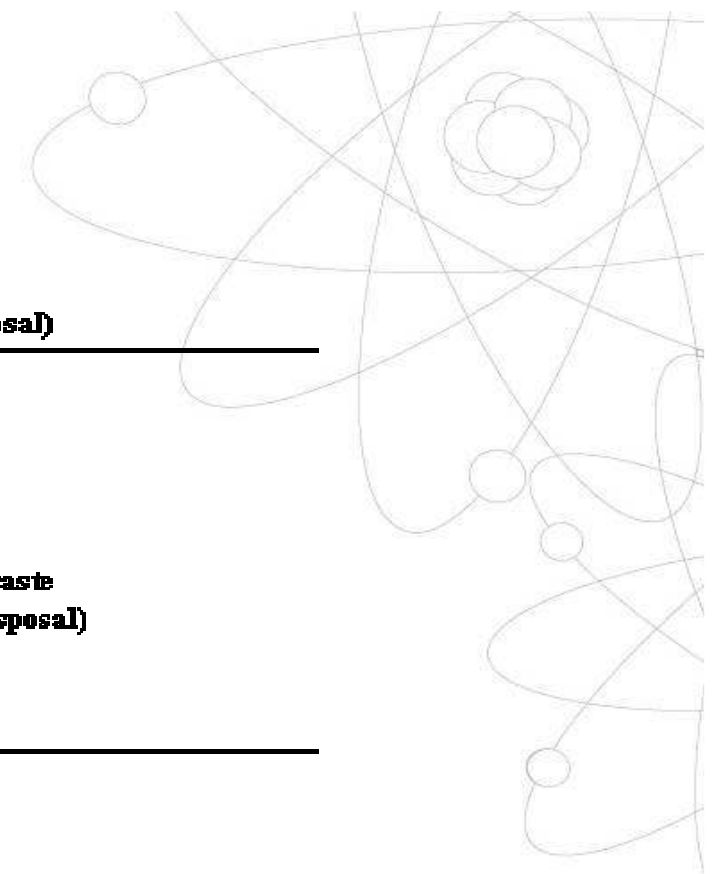
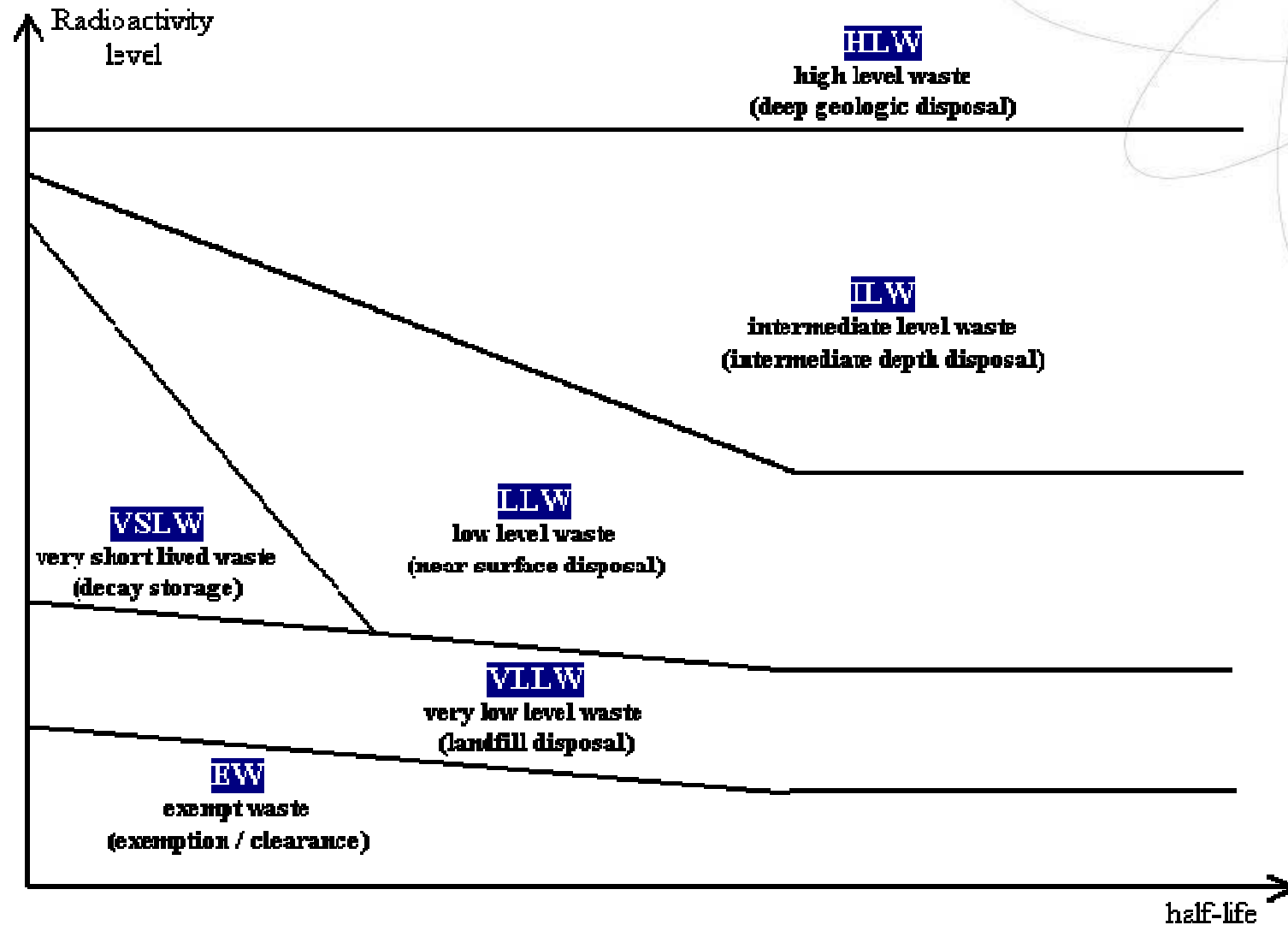


NEW WASTE CLASSIFICATION SCHEME (IAEA)

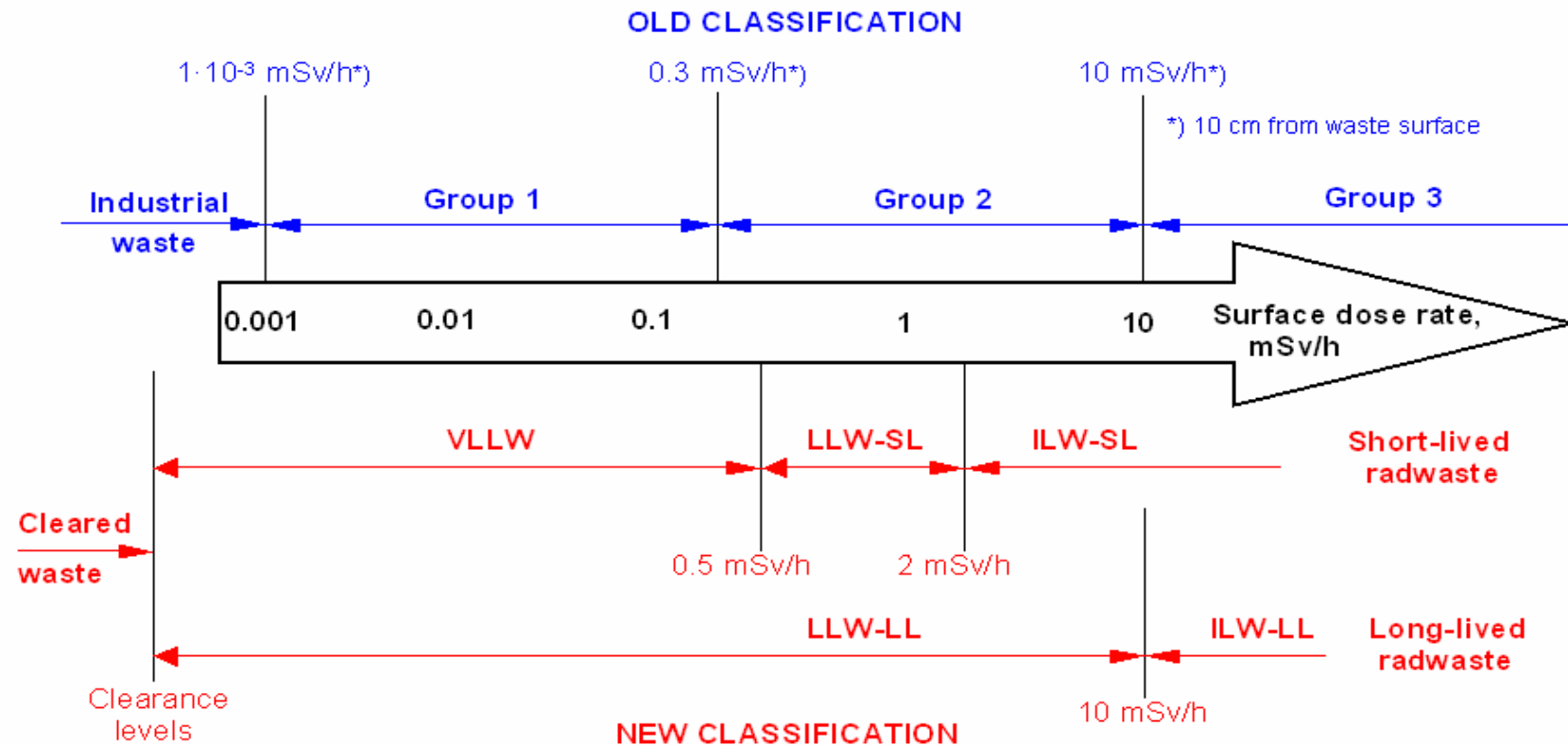
- Exempt waste (EW)
- Very low level waste (VLLW)
- Very short lived waste (VSLW)
- Low level waste (LLW)
- Intermediate level waste (ILW)
- High level waste (HLW)



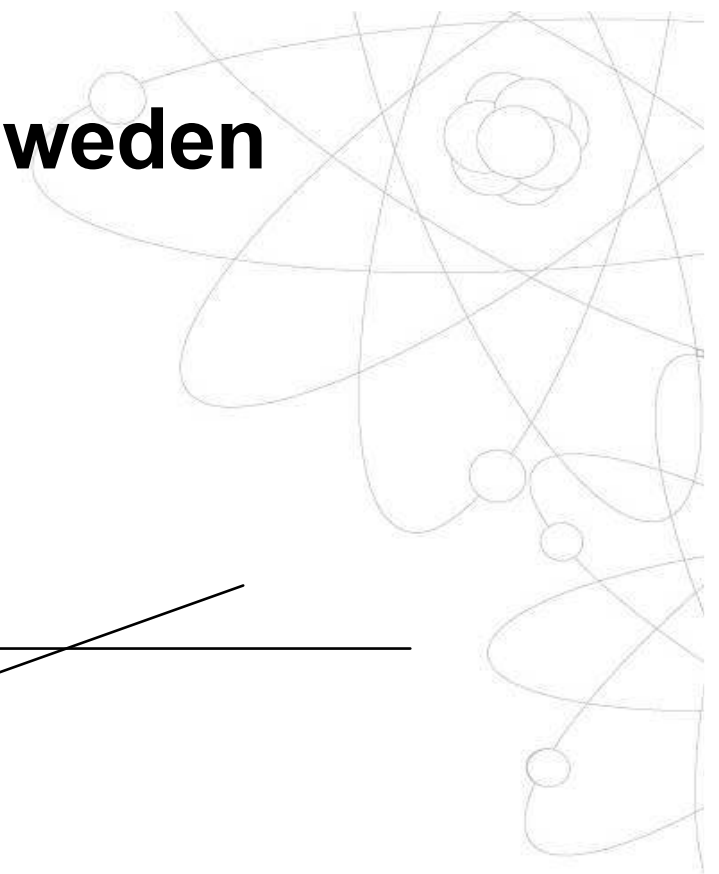
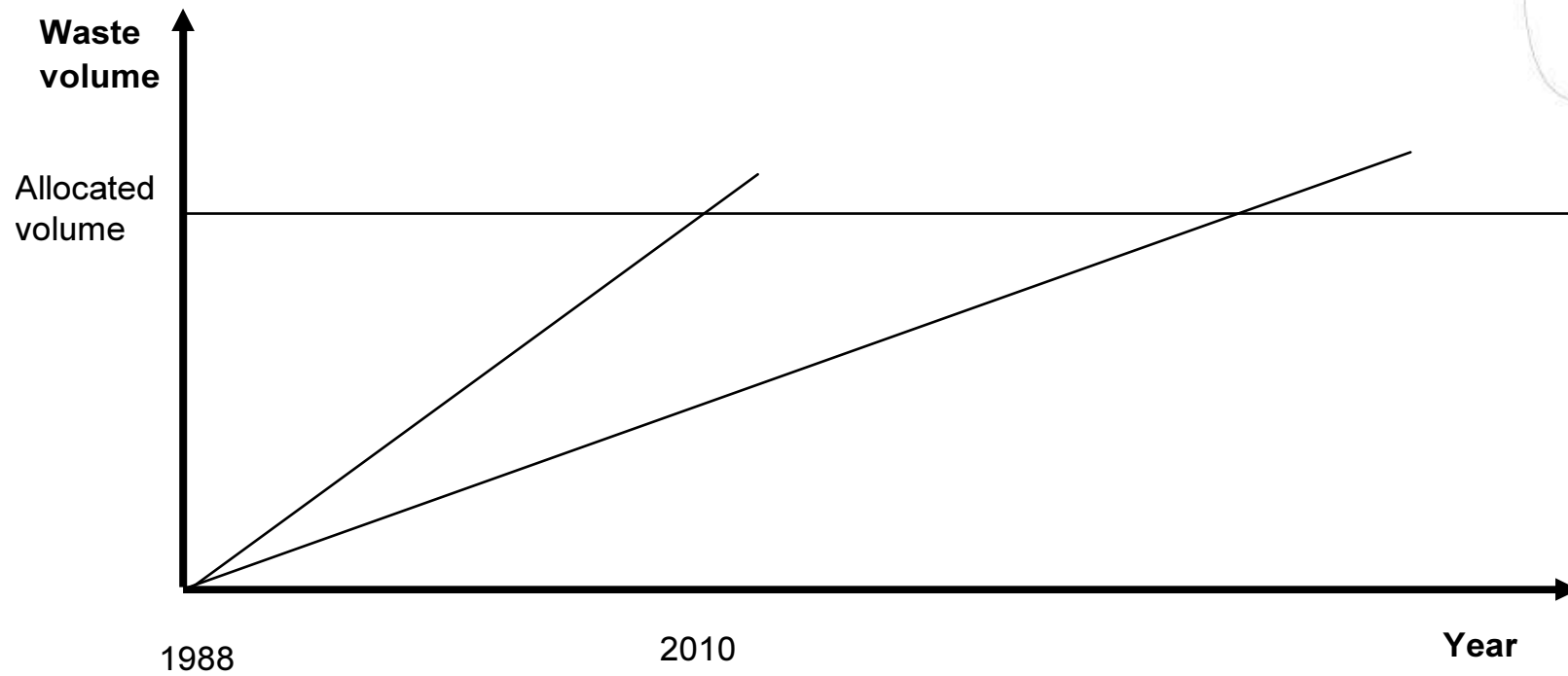
FORMER
LILW



Comparison between old and new classification system

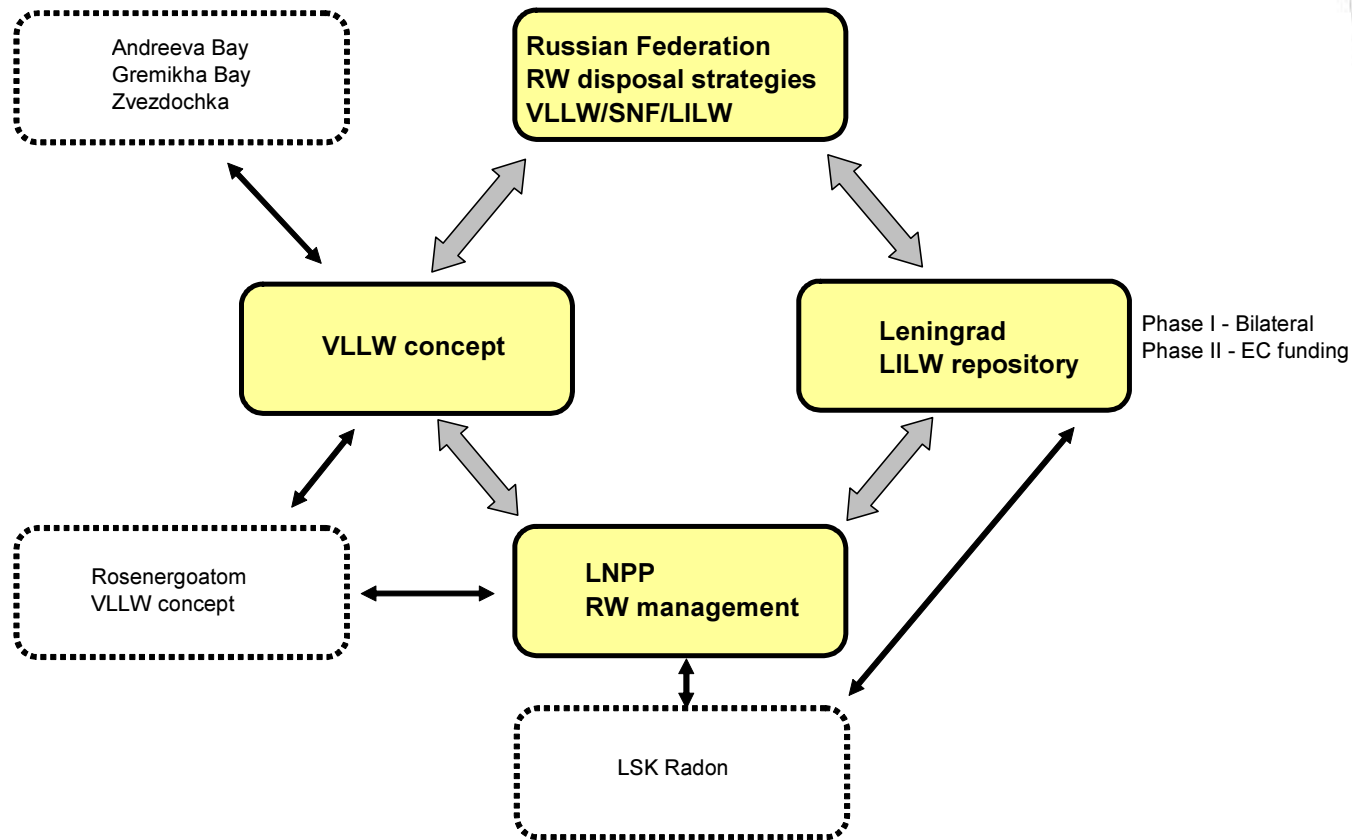


VLLW Background in Sweden



Context of Swedish RWM Activities in NW RF

SKI-ICP and SKB IC Strategy and Projects in RF



2.6.5. ATOMIC POWER ENGINEERING AND INDUSTRY

**Hygienic requirements for industrial waste management at the Federal state
unitary enterprise «Northern federal enterprise for radioactive waste
management»**

(R ONAO SevRAO-08)

Guidance

R.2.6.5. - 08

Legal edition

Moscow 2008

SevRAO WM Projects - Status

- AB SRWM & LRWM feasibility studies (done)
- AB SRWM & LRWM interim solutions (with UK)
- AB UK/BERR/Nuvia – SE/SSM/SKB IC joint financed projects in SNF management
- AB VLLW landfill repositories (detailed design)
- Gremikha VLLW landfill repositories (siting and Dd)
- SevRAO PMD assistance

Disposal Campaign Sweden



Rosenergoatom-LNPP WM Projects - Status



- Started 2007 in connection with reactor safety long range program projects
- Three year project (2007-2009) with REA, LNPP pilot plant
- Transfer of software tools
- Procurement of hardware
- RW categorisation
- RW handling and minimization
- RW tracking and documentation
- VLLW landfill repository
- Bitumenized waste issue

Rosenergoatom-KNPP WM Projects - Status



- Started 2007 in connection with reactor safety long range program projects
- Procurement of RWM equipment based on foreign technology
- 2008 additional projects under discussion

Experience from Assistance to RWM at RF NPPs

- For political reasons allocations for reactor safety is being reduced while it is correspondingly increased for RWM
- Co-financing of Nordic countries (SE-NO-FI) has been functional
- The RF degree of co-financing has increased over the years
- Assistance has given LNPP and KNPP access to procurement of foreign RWM technology

Zvezdochka WM Project Outline



- Strategic Master Plan II proposes EBRD Nordic Dimension Environmental Partnership (NDEP) project 1.6.1.1 "Modernisation of RW management infrastructure at FSUE Zvezdochka
- EBRD asks SSM to initiate a VLLW landfill repository project at Zvezdochka
- SSM – Zvezdochka discussions ongoing

Context of Swedish RWM Activities in NW RF

SKI-ICP and SKB IC Strategy and Projects in RF

